

20ft Timberline™ Monitor Kit with Straight Sides • TLKIT9



Single-Sided Graphic

Product Specifications	
Display Dimensions	238.5" w x 96" h x 19" d
Display Weight	340 lbs
Case Dimensions	27.5" W x 48" h 13.5" D
Acrylic Table Dimensions	24" W x 36" H x 16" D
Acrylic Shelf Dimensions	18.75" w x 9.5" h
Graphic Area Size of Center Panel	80" w x 80" h
Graphic Area Size for Each end Panel	15.75" w x 80" h
Counter Dimensions	31" w x 40" h x 16" d
Counter Weight	16 lbs
Set up time	40 minutes 2 people



Aerial grid of 20' x 10' space



Side View

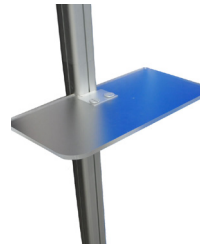
About This Product

Our 20ft Timberline™ dual monitor display package is the ideal solution to maximize attention to your brand by combining our signature 20ft hybrid modular design with areas on both sides to support an LED monitor!

Our Timberline™ trade show displays are the undisputed choice to maximize your booth's attention!

Package Includes

- (2) 10ft Modular display frames
- (2) Center graphic panels
- (3) Monitor/joiner graphic panels
- (2) Straight wing panels
- (2) Wave top canopies
- (2) Frosted acrylic reception desks
- (2) Metal fusion printed headers
- (6) Acrylic shelves
- (1) Box of tools and screws
- (1) Box of side acrylic panel screws
- (2) Molded plastic wheeled cases
- (4) LED lights
- (2) 40" Wave tube counters
- (2) Large monitor mounts for a 30"-50" monitor
- (1) Instructions



Optional Items

- Custom printed canopies
- Small monitor mount

