

# 30ft Timberline™ Hybrid Modular Straight Display Kit w/ Slat Walls • TLKIT4



## Single-Sided Graphic

### Product Specifications

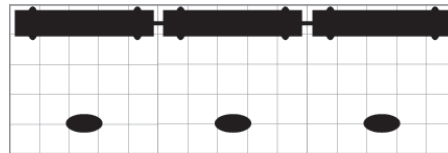
Display Dimensions	359"w x 96"h x 20"d
Weight	123 lbs each case
Case Dimensions	(4) 27.5"w x 48"h 12.5"d
Acrylic Table Dimensions	24"w x 36"h x 16"d
Acrylic Shelf Dimensions	9.5"w x 18.75"l
Graphic Area Size of Center Panel	80"w x 80"h
Graphic Area Size for Each end Panel	80"w x 15.75"h
Set up time	40 minutes 2 people



\*Monitors not included

### About This Product

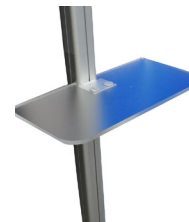
Our Timberline™ Hybrid Series gives you the ultimate in versatility. Customizable modular displays can be arranged in numerous configurations. Displays are easy to set up and adjust to fit any size area. Showcase your products for your tradeshows or special events with a variety of options such as reception desks and shelves.



Side View

### Package Includes

- (3) Modular display frames with dye-sublimation graphics
- (2) Joiner panels
- (3) Large center panels
- (3) Wave Top canopies
- (3) Frosted acrylic reception desks
- (6) LED lights
- (1) Box of tools and screws
- (4) Molded plastic Case
- (9) Acrylic shelves
- (3) Metal fusion printed headers
- (3) Wave tube counters with dye-sublimation graphics
- (4) Maple slat wall panels for product display
- (2) Large monitor mounts for a 30"-50" monitor; **Not to exceed 50 lbs.**
- (1) Instructions



### Optional Items

- Custom printed canopies
- Small monitor mount

