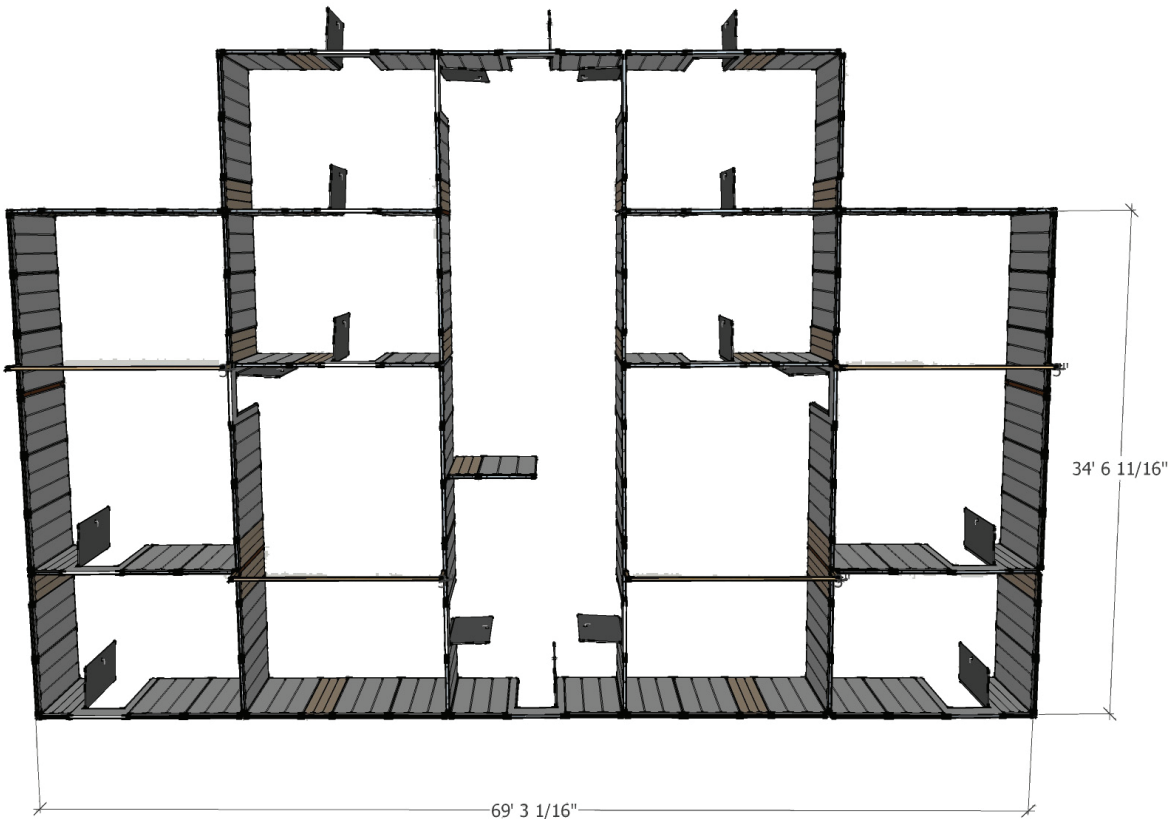
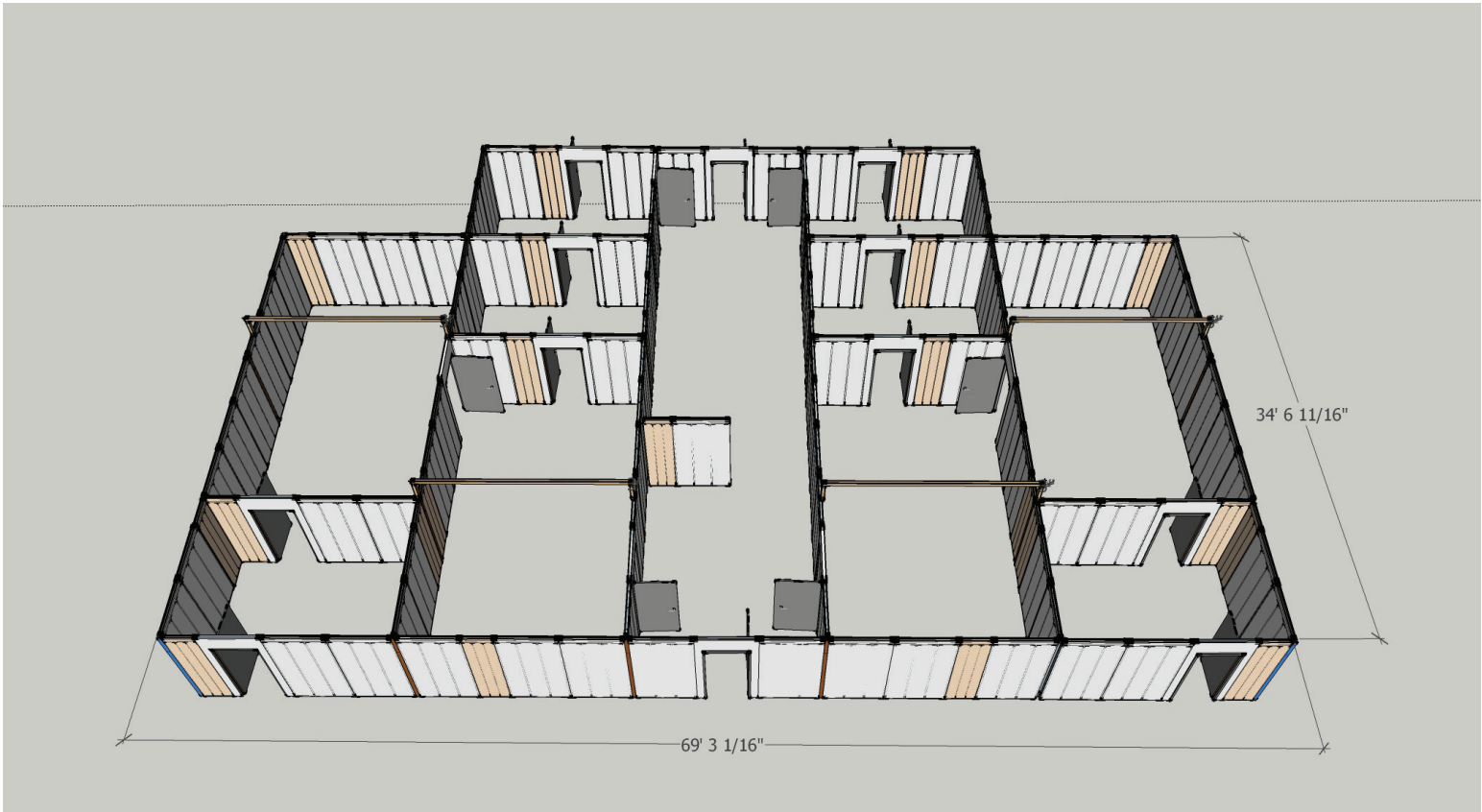




This entire structure is composed of 8 basic parts:
4 panel types, 3 joiner types and 1 type of overhead support.

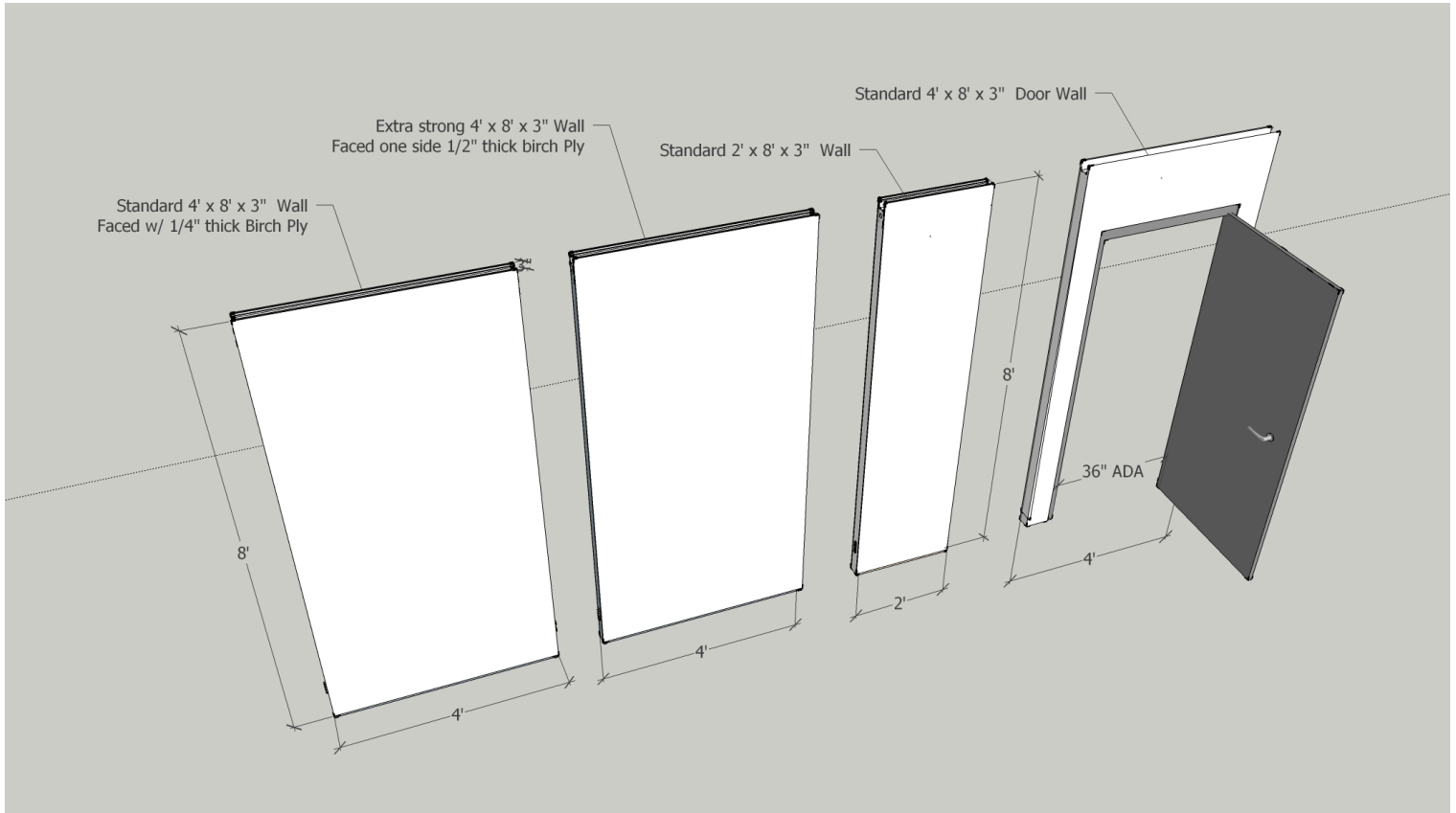


4 TYPES OF WALL PANELS

2' x 8', 4' x 8', 4' x 8' Extra Strong and 4' x 8' Door Units

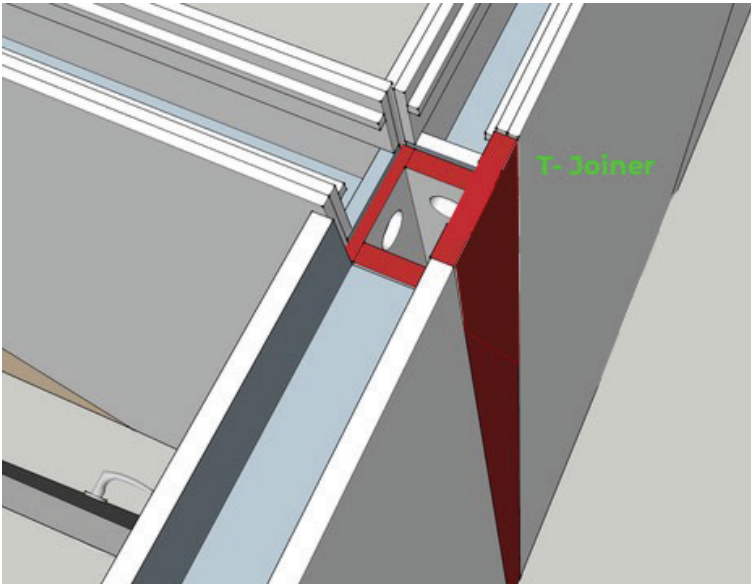
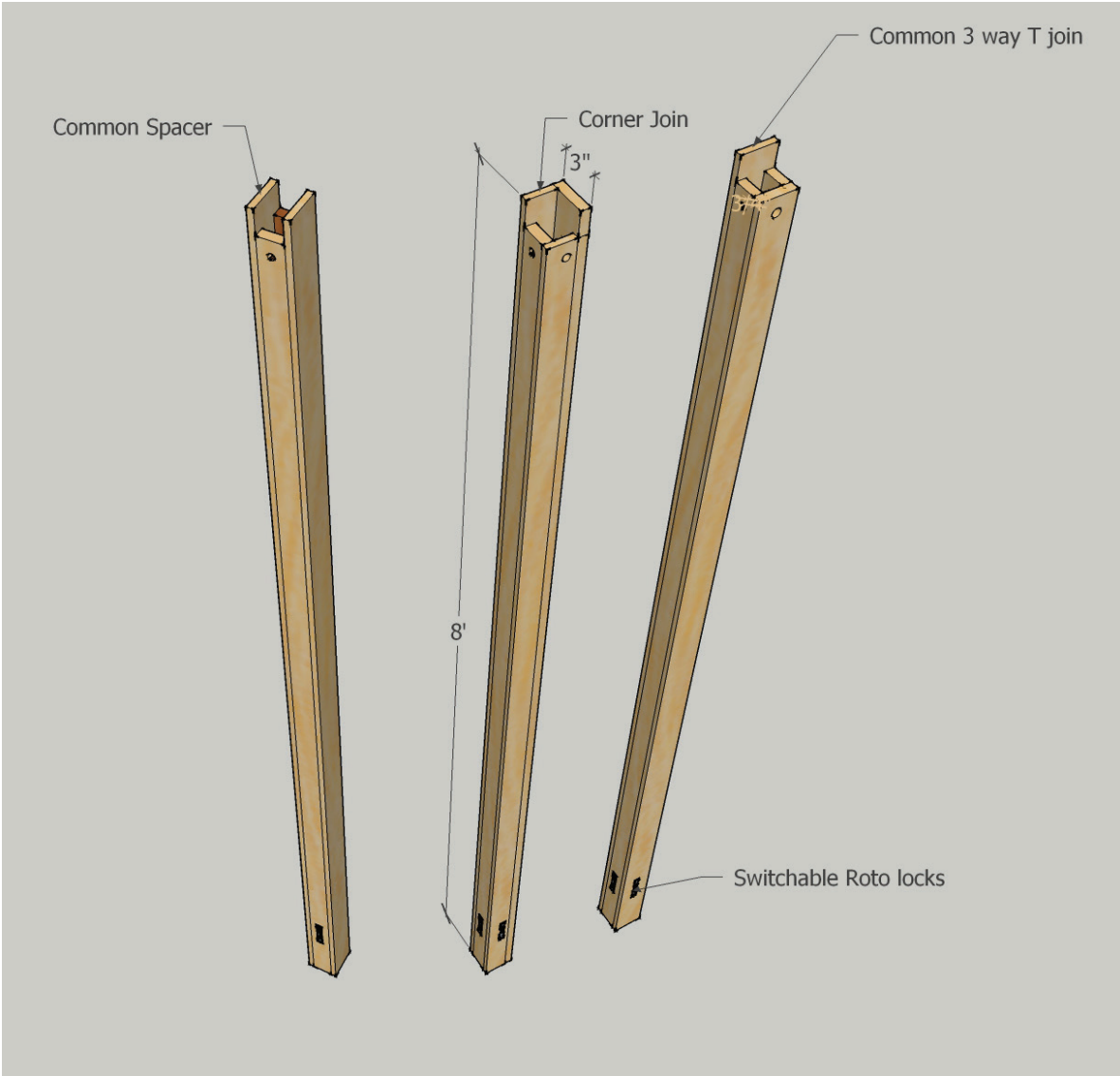
Standard 4' x 8' panels (85% of the structure) are approx 60 lbs each.

Panels are universal to each section. If it calls for a 4x8 just grab a 4x8 section.



CORNER POSTS AND T-JOINERS

3 types of posts. 1/4" bolt at the top and simple roto locks at the bottom.



OVERHEAD BEAMS

They simply slide into place on top of walls

