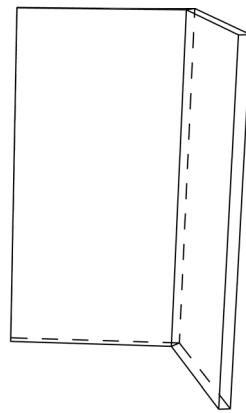
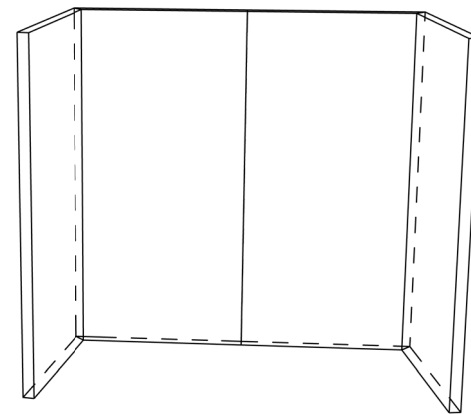


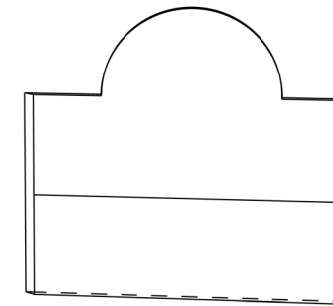
1. ATTACH LEFT WALL PANEL TO BACK WALL PANEL



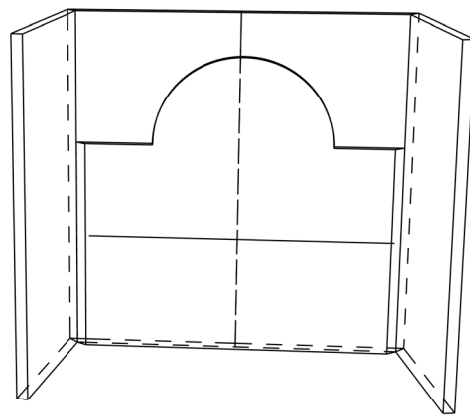
2. ATTACH RIGHT WALL PANEL TO BACK WALL PANEL



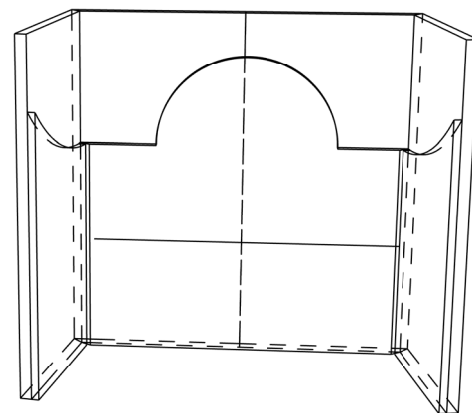
3. ATTACH BACK WALL PANELS TOGETHER



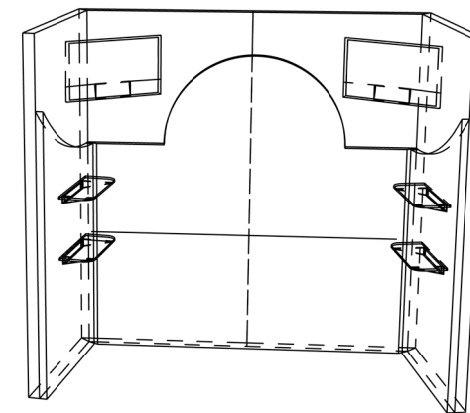
4. ATTACH BACK WHITE DISPLAY PANELS (v-block)



5. ATTACH BACK WHITE DISPLAY PANELS TO BACK WALL



6. ATTACH WHITE DISPLAY PANELS TO BACK SIDE PANELS



7. MOUNT TVS, PLUG IN LIGHTS, MOUNT SHELVES, AND ATTACH BACK

Shelves stored in cabinets. Screw in (tee nuts on back to indicate placement)