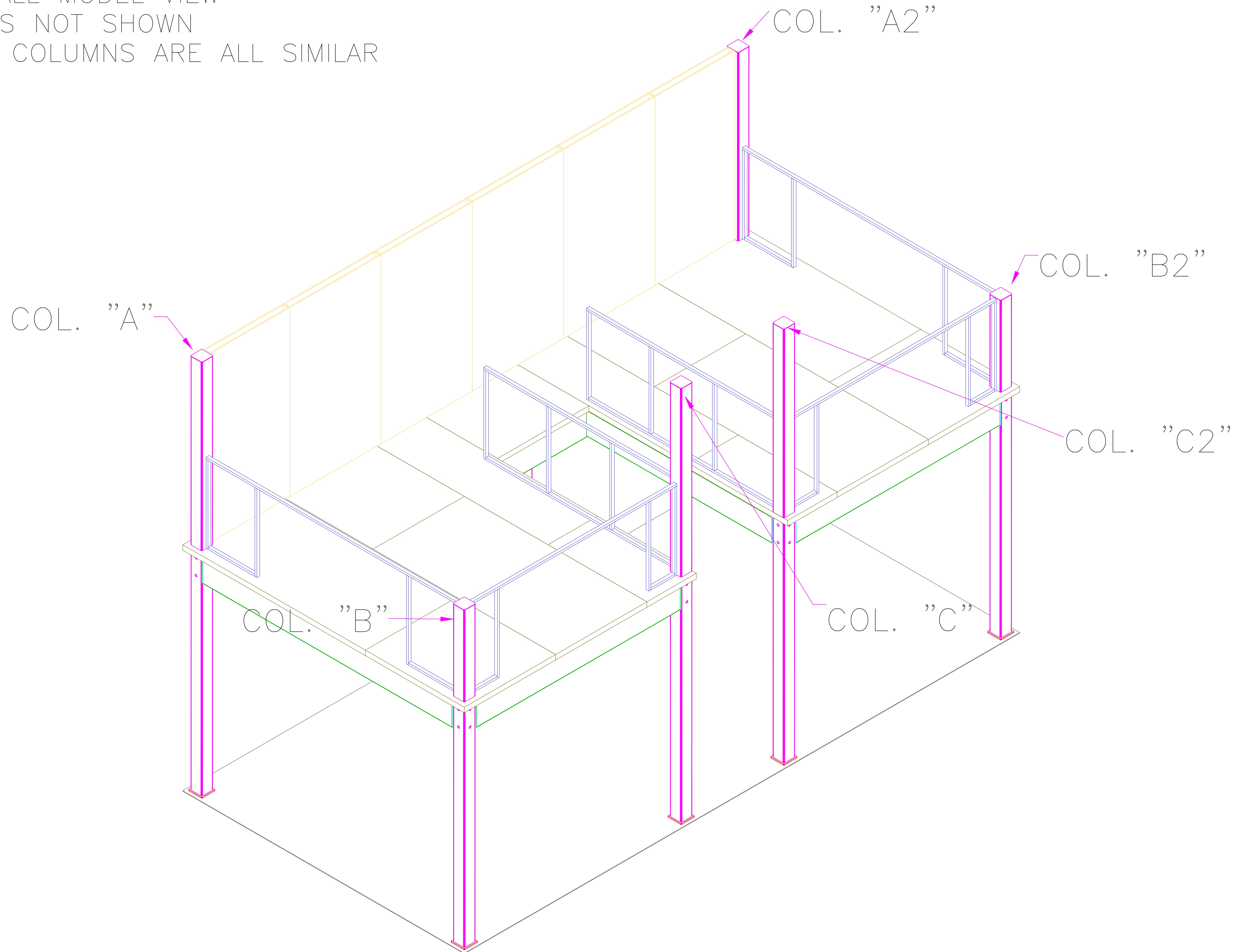
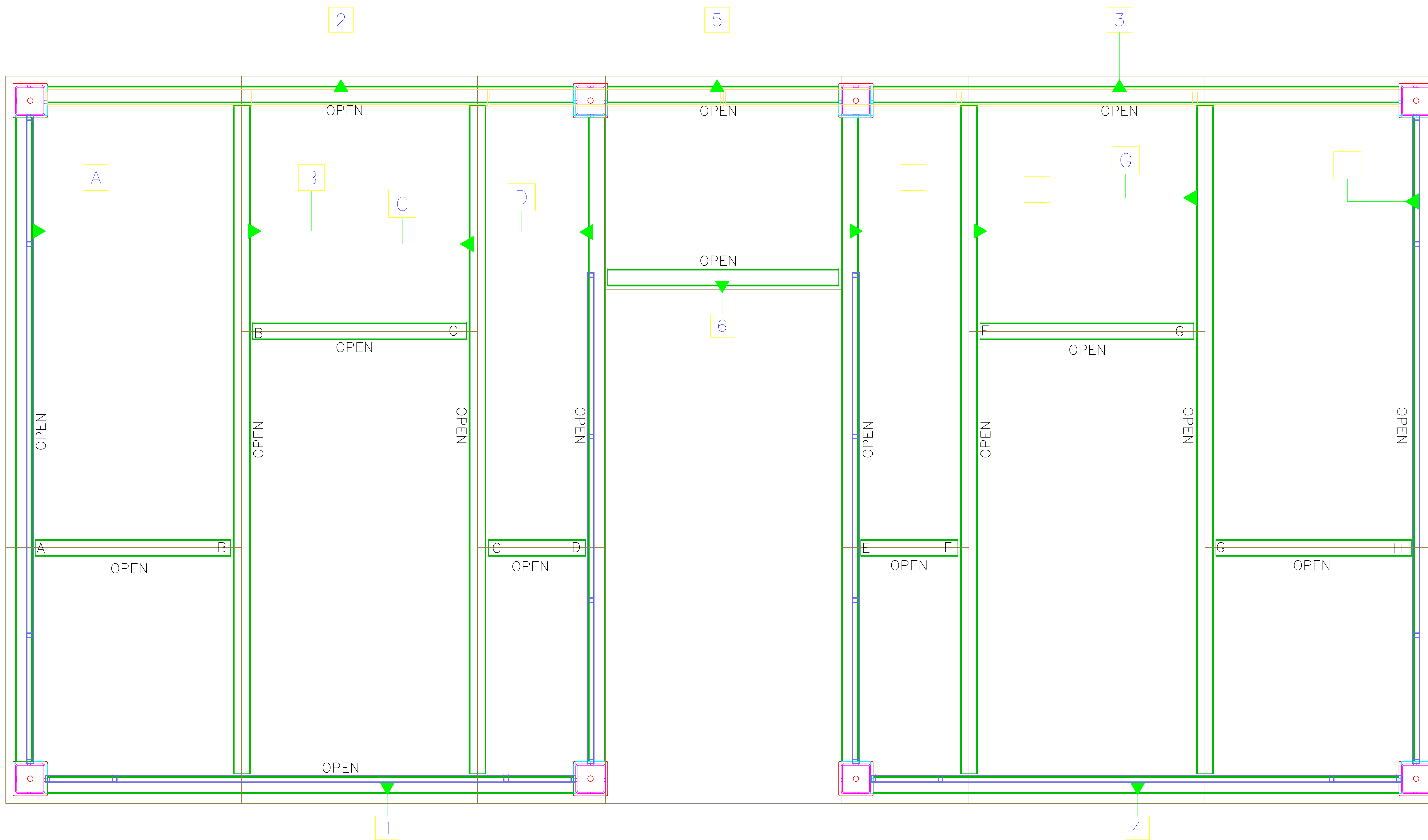
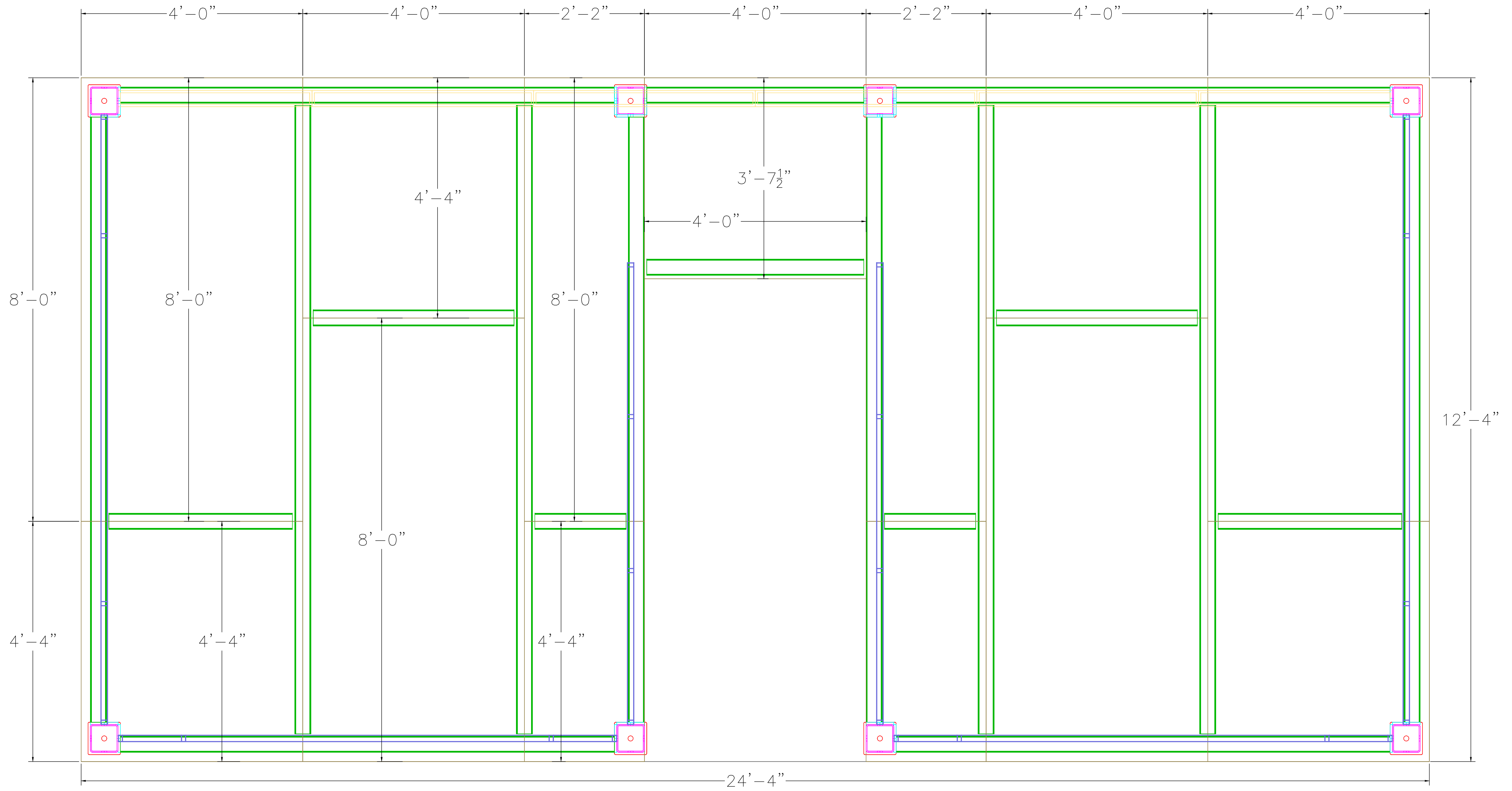
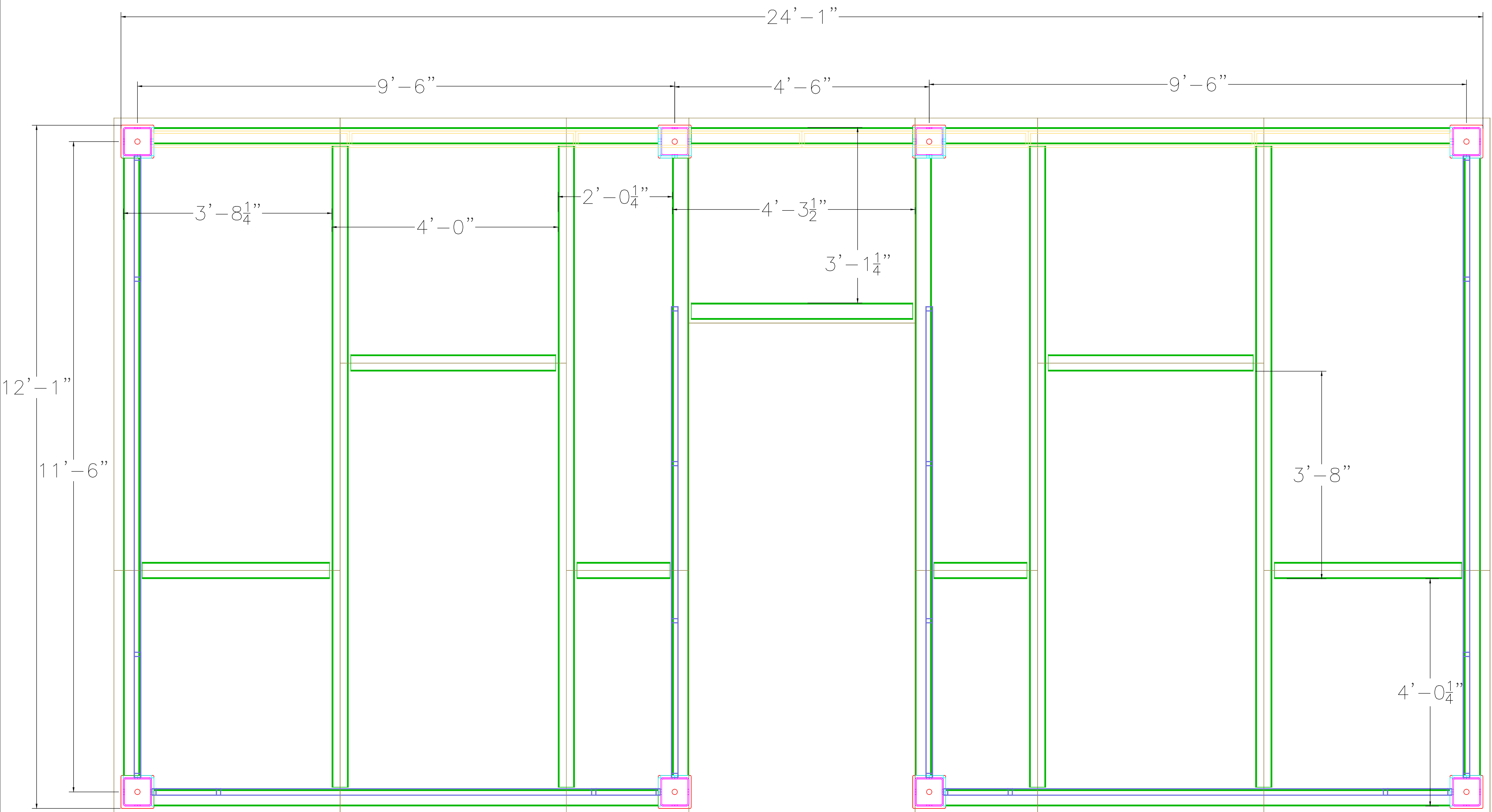


OVERALL MODEL VIEW
STAIRS NOT SHOWN
BASE COLUMNS ARE ALL SIMILAR









THESE DIMS DO NOT INCLUDE THE ENDPLATES.

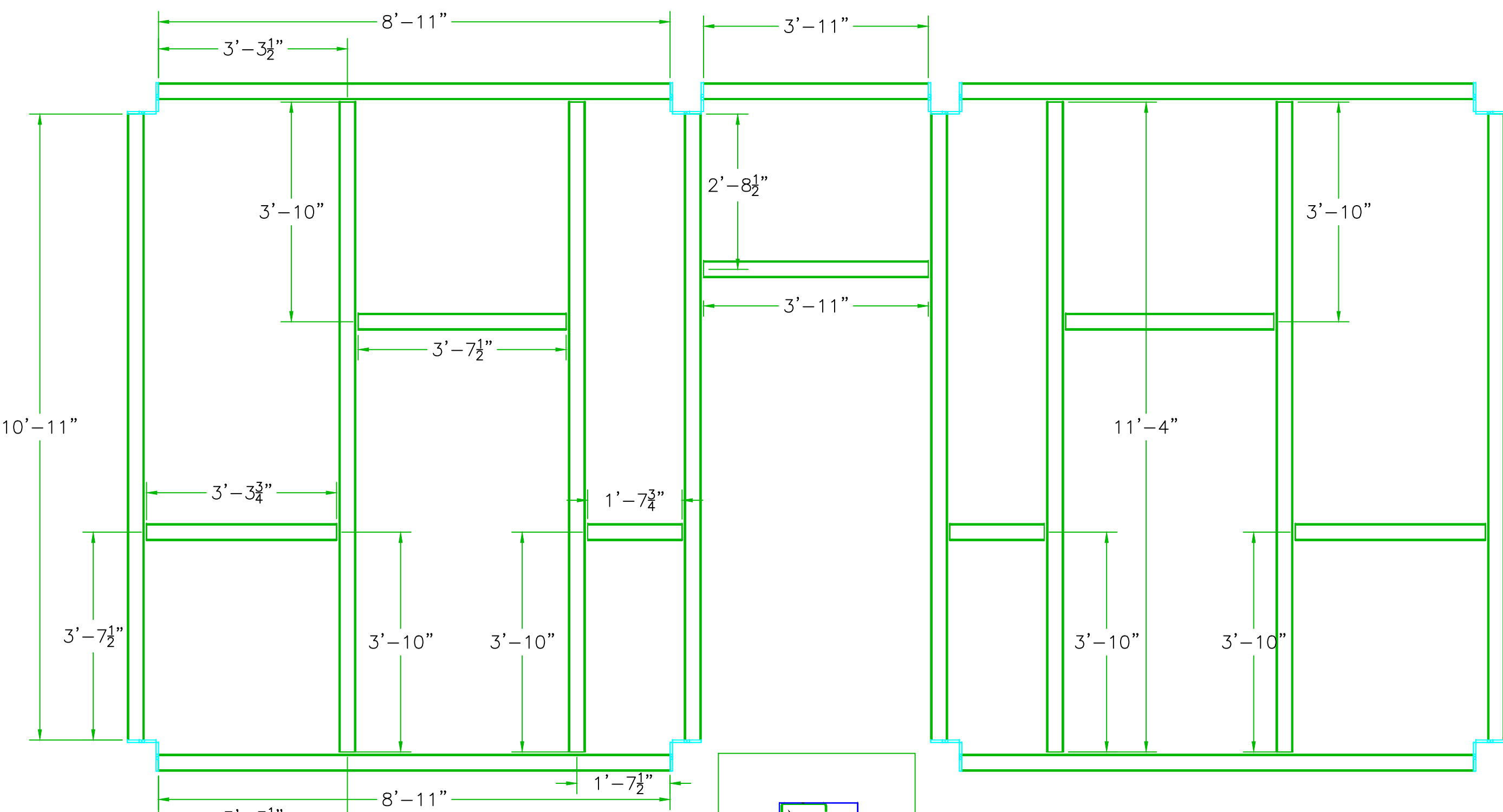
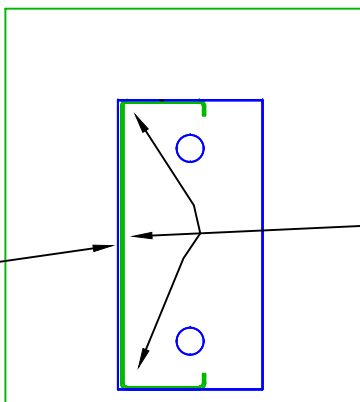
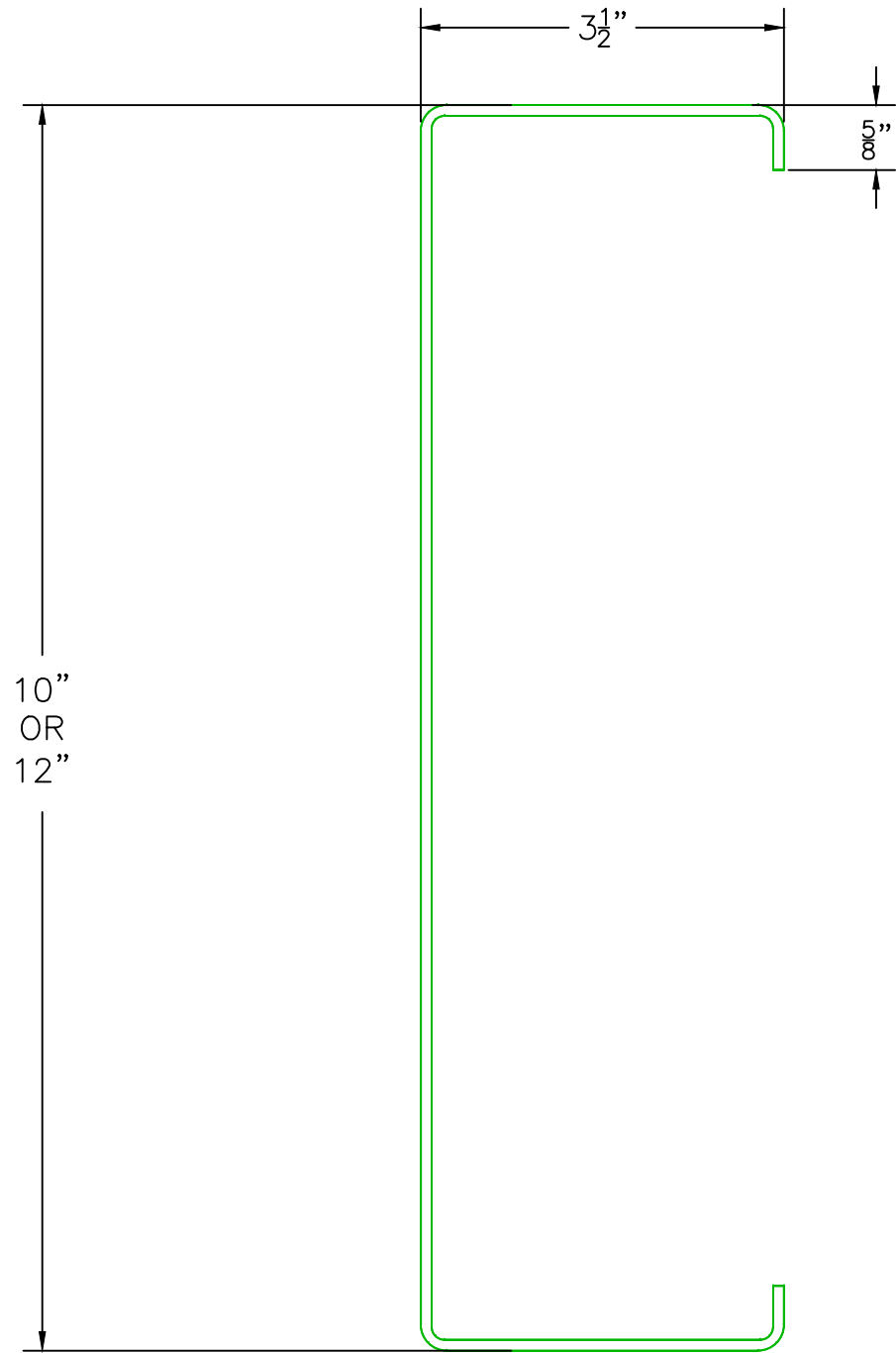
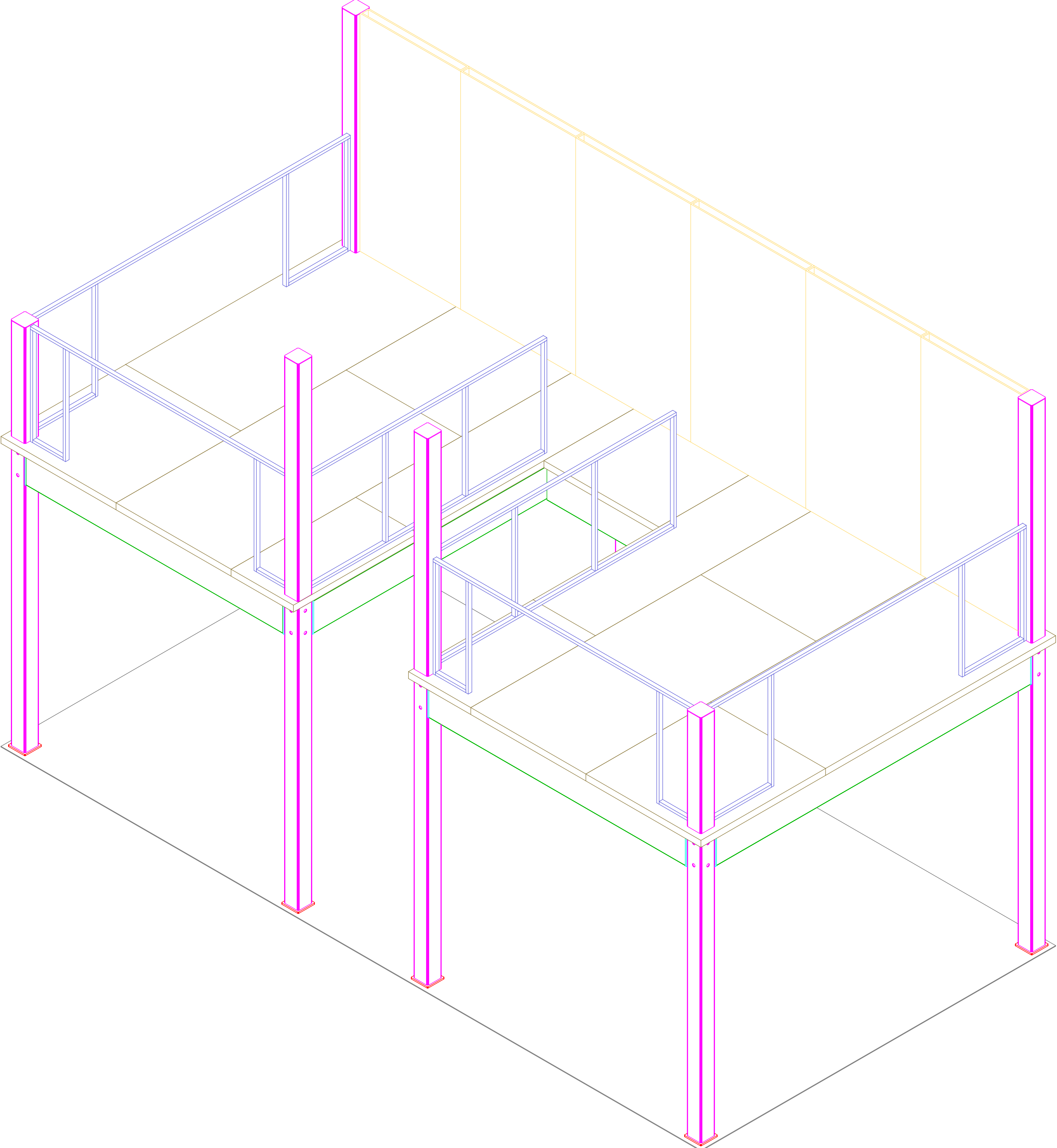


PLATE FLUSH OR
INSET $\frac{1}{8}$ " FROM CHANNEL

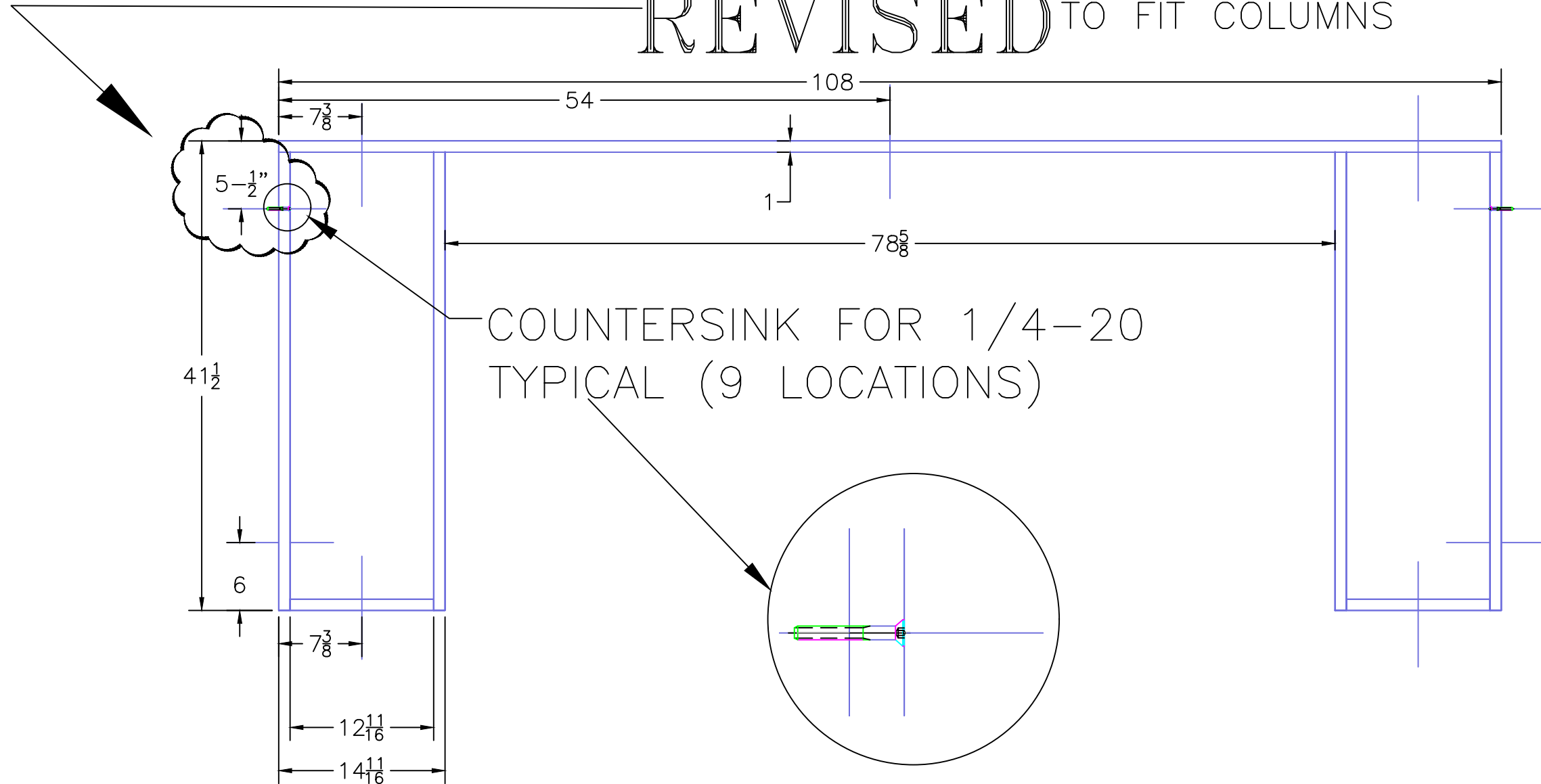


WELD PER
USUAL STANDARD $\frac{1}{2}$ " X 6" X 12"
JOIST END PLATES





REVISED TO FIT COLUMNS



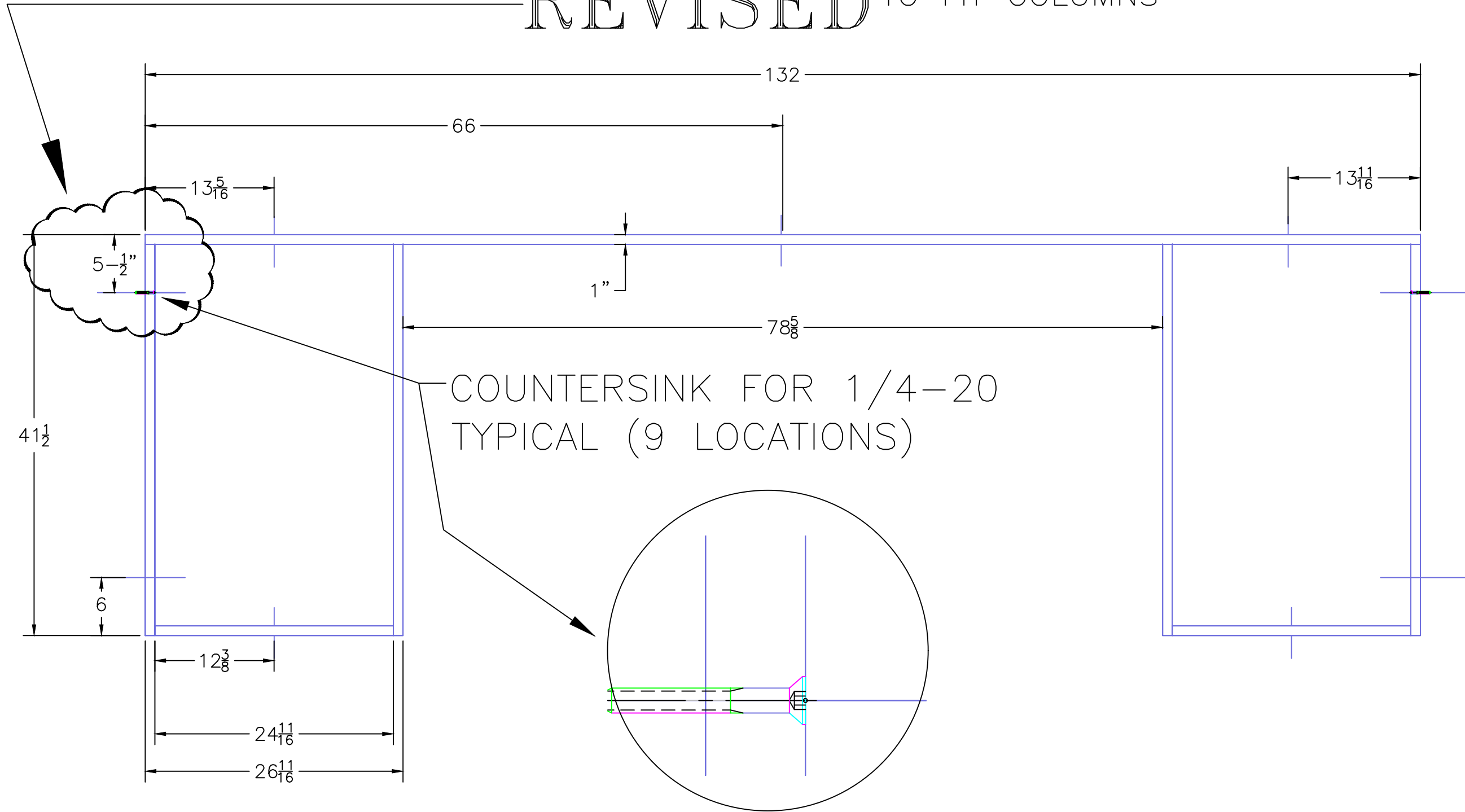
ALL HOLES ARE COUNTERSUNK FROM THE 'INSIDE' OF THE FRAME.

WELD AND GRIND SMOOTH ALL FACES.
NICE, CLEAN WELDS.
DO NOT CAP ENDS.

MATERIAL IS 1" X 1-1/2" X .120"
STEEL TUBE.

MAKE 2 AS SHOWN

REVISED TO FIT COLUMNS



ALL HOLES ARE COUNTERSUNK FROM THE 'INSIDE' OF THE FRAME.

WELD AND GRIND SMOOTH ALL FACES.
NICE, CLEAN WELDS.
DO NOT CAP ENDS.

MATERIAL IS 1" X 1-1/2" X .120"
STEEL TUBE.

MAKE 2 AS SHOWN

THE COLUMNS LABELED "B" & "B2" GET DRILLED AND TAPPED ON 2 ADJOINING SIDES AS SHOWN.

DRILL & TAP SIZE IS 1/4-20

THE COLUMNS LABELED "C" & "C2" GET DRILLED AND TAPPED ON 1 SIDE AS SHOWN.

DRILL & TAP SIZE IS 1/4-20

