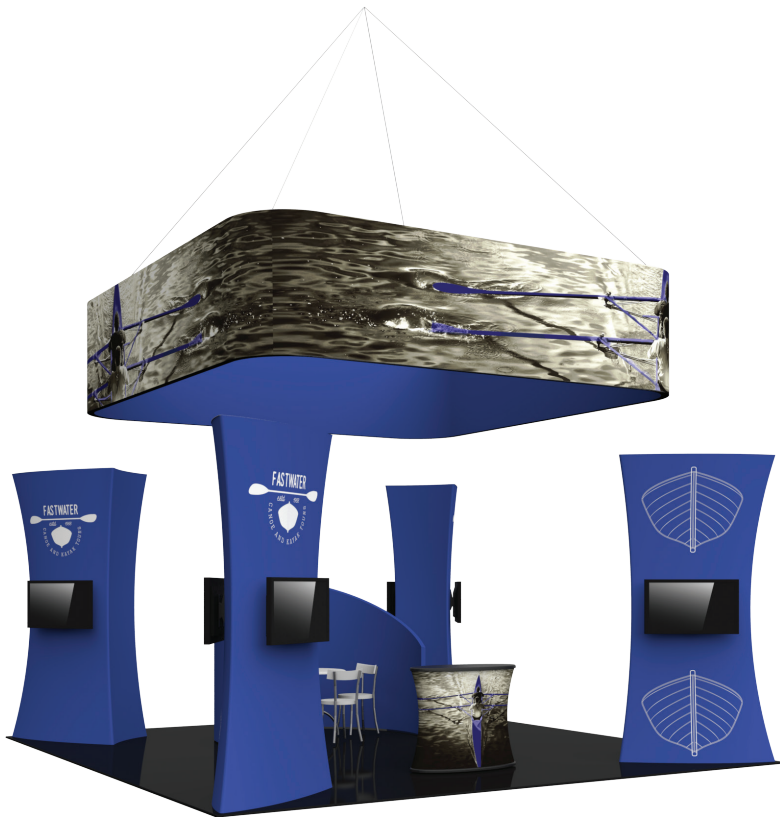


# Formulate 20'x 20' Island Exhibit - Kit 10

## CFAB-K-10

Formulate® Fusion provides an unparalleled dynamic that elevates and accentuates a message and brand, but also maximizes the return on tradeshow investment. Formulate Fusion is Origin's collection of 20ft x 20ft exhibit kits and custom solutions. A fusion of FORM, FABRIC and FUNCTION, these kits combine organic and architectural shapes with state-of-the-art zipper pillowcase dye-sublimated fabric graphics to create unique, dynamic and functional island space.



## features and benefits:

- 30mm aluminum tube frame
- Single-sided SEG dye-sublimated fabric graphics
- Kit includes frame, dye-sublimated graphics and eight medium monitor mounts.
- Kit includes: medium monitor mounts, can hold 32-55" monitor / max weight 80lbs
- Lifetime hardware warranty against manufacturer defects

## dimensions:

### Hardware

### Graphic

### Assembled unit:

195.75" w x 150.75" h x 177.65" d  
4969mm(w) x 3829mm(h) x 4510mm(d)

Refer to related graphic template for more information.

Visit:  
[www.exhibitors-handbook.com/graphic-templates](http://www.exhibitors-handbook.com/graphic-templates)

### Approximate weight with cases:

1339 lbs / 607 kg

## additional information:

### Shipping

Graphic material:  
Dye-sublimation zipper pillowcase fabric

Packing case(s):  
1 WOODCRATE-H  
1 FS-WOODCRATE

\*Monitors and furniture not included

Shipping Dimensions:  
WOODCRATE-H:  
101"l x 53"h x 31"d  
2565mm(l) x 1347mm(h) x 788mm(d)

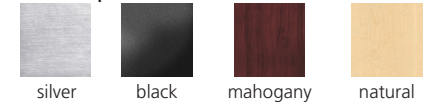
Monitor mount holds max weight:  
80 lbs / 37 kg

Monitor mount holds monitor sizes:  
32" - 55"

FS-WOODCRATE:  
90"l x 33"h x 30"d  
2286mm(l) x 839mm(h) x 762mm(d)

Approximate total shipping weight  
(includes cases & graphics):  
1544 lbs / 700 kg

### Tabletop Colors:



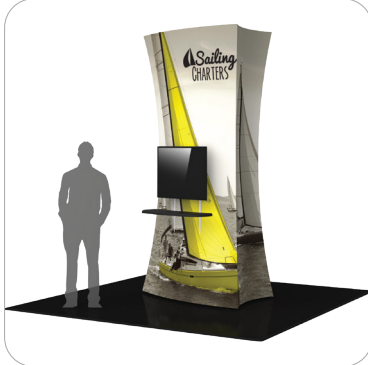
### 4 person assembly recommended:



We are continually improving and modifying our product range and reserve the right to vary the specifications without prior notice. All dimensions and weights quoted are approximate and we accept no responsibility for variance. E&OE. See Graphic Templates for graphic bleed specifications.

# Included In Your Kit

STRUCTURES



TOWER-03 x4



C-WALL x1



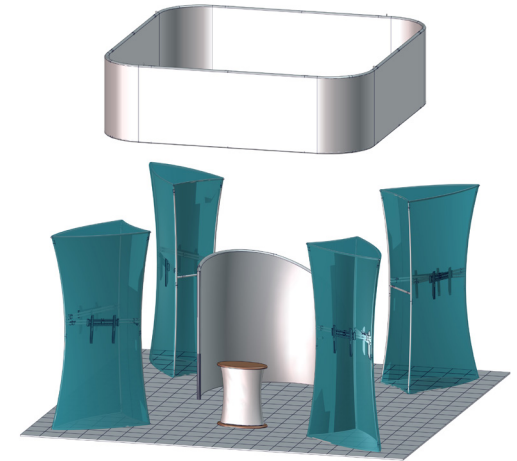
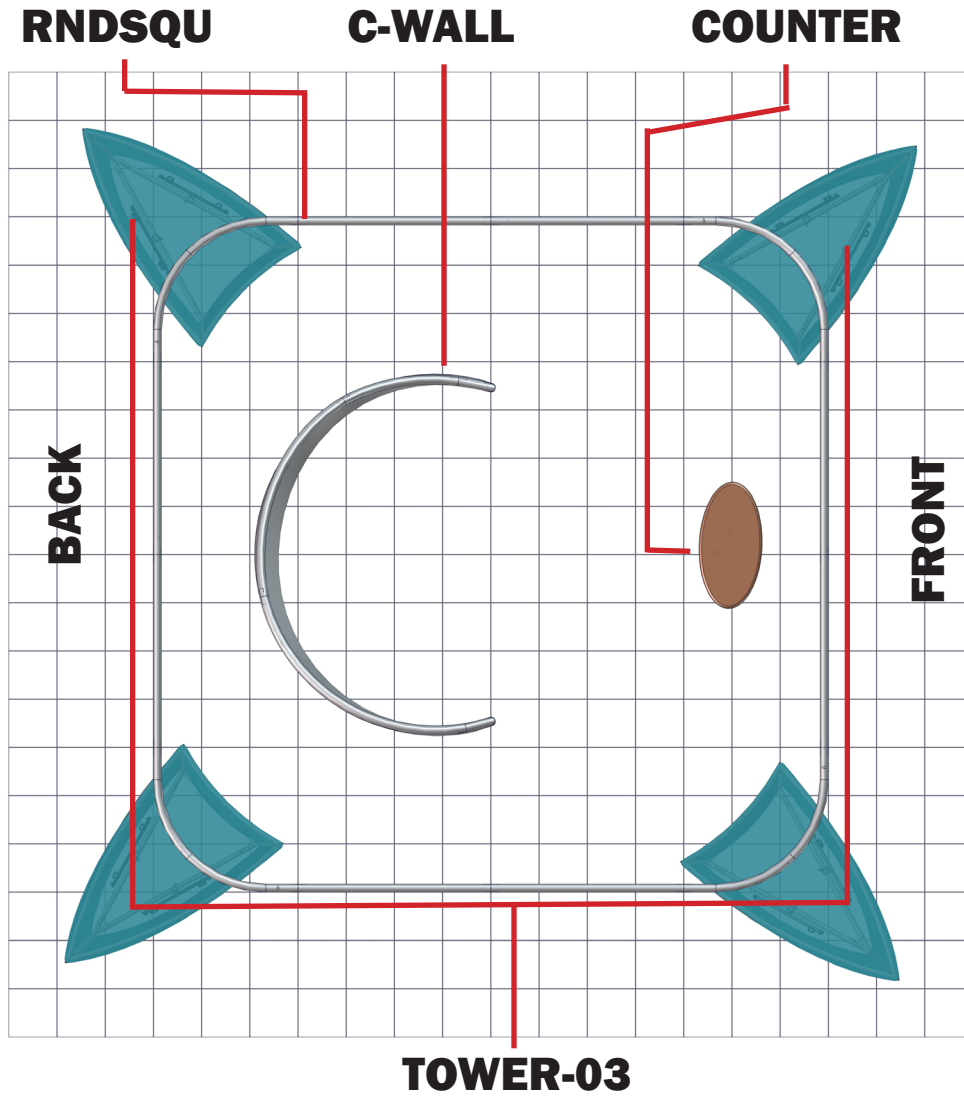
W-01-C x1



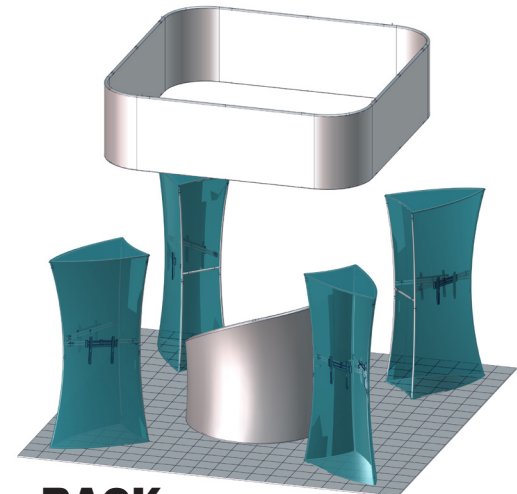
RNDSQU-1606 x1

# Suggested Kit Layout

CFAB-K-10



**FRONT**



**BACK**

# Formulate Tower - 03

## TOWER-03

When you are looking for a way to draw attention and captivate your audience at a tradeshow, special event, or in a permanent environment, these Formulate® tension fabric architectural structures are designed to impress. Mix and match the Formulate line of towers to add architecture and drama to any event or interior space. Cylinder, Rectangular and Shield-shaped towers come in 12', 10' and 8' heights and 3' square / diameters at the tops and bottoms.



We are continually improving and modifying our product range and reserve the right to vary the specifications without prior notice. All dimensions and weights quoted are approximate and we accept no responsibility for variance. E&OE. See Graphic Templates for graphic bleed specifications.

## features and benefits:

- Premium aluminum tube frames with spigot and snap button assembly
- Easy to store and ship
- Quick to set up
- Lifetime limited hardware warranty against manufacturer defects
- One zipper pillowcase fabric graphic
- Kit includes two medium monitor mounts and two wheeled molded storage cases

## component dimensions:

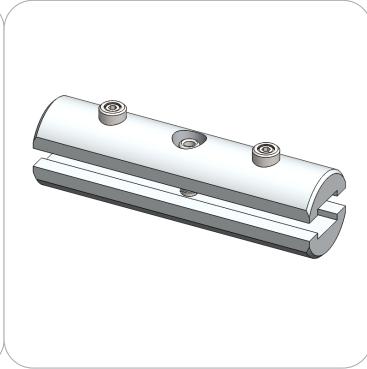
Hardware	Graphic
<p>Assembled unit: 60"w x 120"h x 36.22"d 1524mm(w) x 3048mm(h) x 920mm(d)</p> <p>Approximate weight: 57 lbs / 26 kg</p>	<p>Refer to related graphic template for more information.</p> <p>Visit: <a href="http://www.exhibitors-handbook.com/graphic-templates">www.exhibitors-handbook.com/graphic-templates</a></p>
<h3>additional information:</h3>	
<p>Graphic material: Dye-sublimation zipper pillowcase fabric</p> <p>*Monitors not included</p> <p>When included in a larger kit, a different packaging solution will be listed to accommodate all contents of the kit. Individual packaging no longer provided.</p> <p>Monitor mount holds max weight: 80 lbs / 37 kg</p> <p>Monitor mount holds monitor sizes: 32" - 55"</p>	

# Included In Your Kit

Tools, Components,  
& Connectors



HEX KEY SET x1

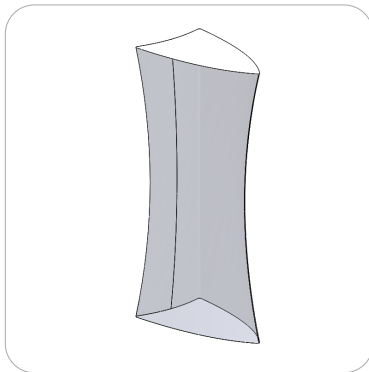


ES30 x40



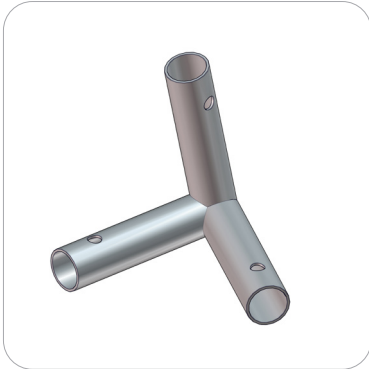
TUBE-M-MB x2

Graphics



TOWER-03-G x1

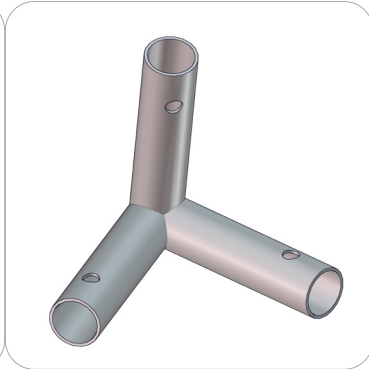
# Included In Your Kit



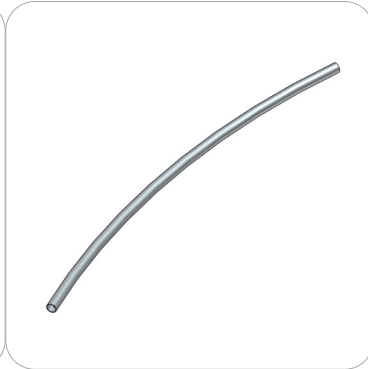
TOWER-02-T1 x2



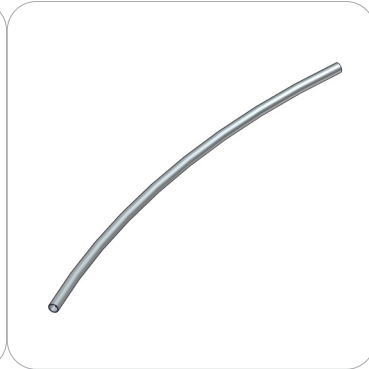
TOWER-02-T2 x2



TOWER-02-T3 x2

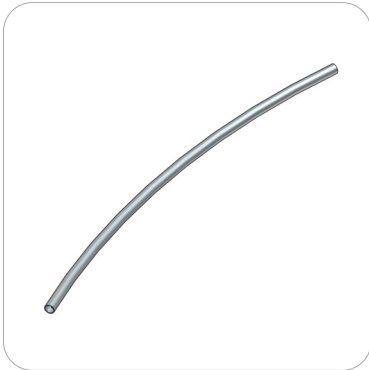


TOWER-02-T4 x2



TOWER-02-T5 x2

Tubes



TOWER-02-T6 x4



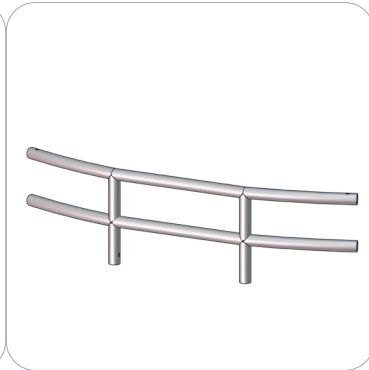
TOWER-02-T7 x2



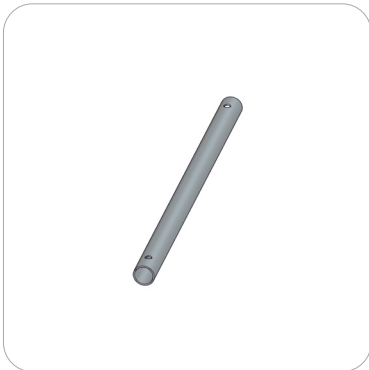
TOWER-02-T8 x2



TOWER-02-T9 x1



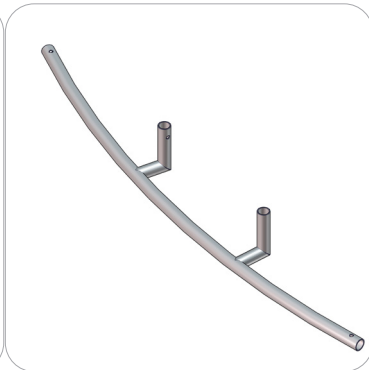
TOWER-02-T10 x2



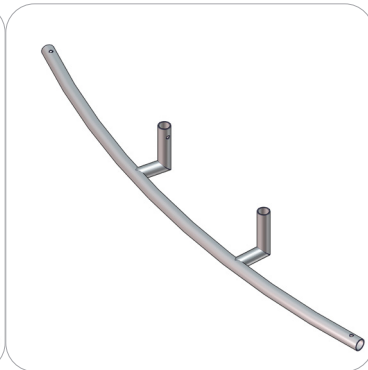
TOWER-02-T11 x1



TOWER-02-T14 x4



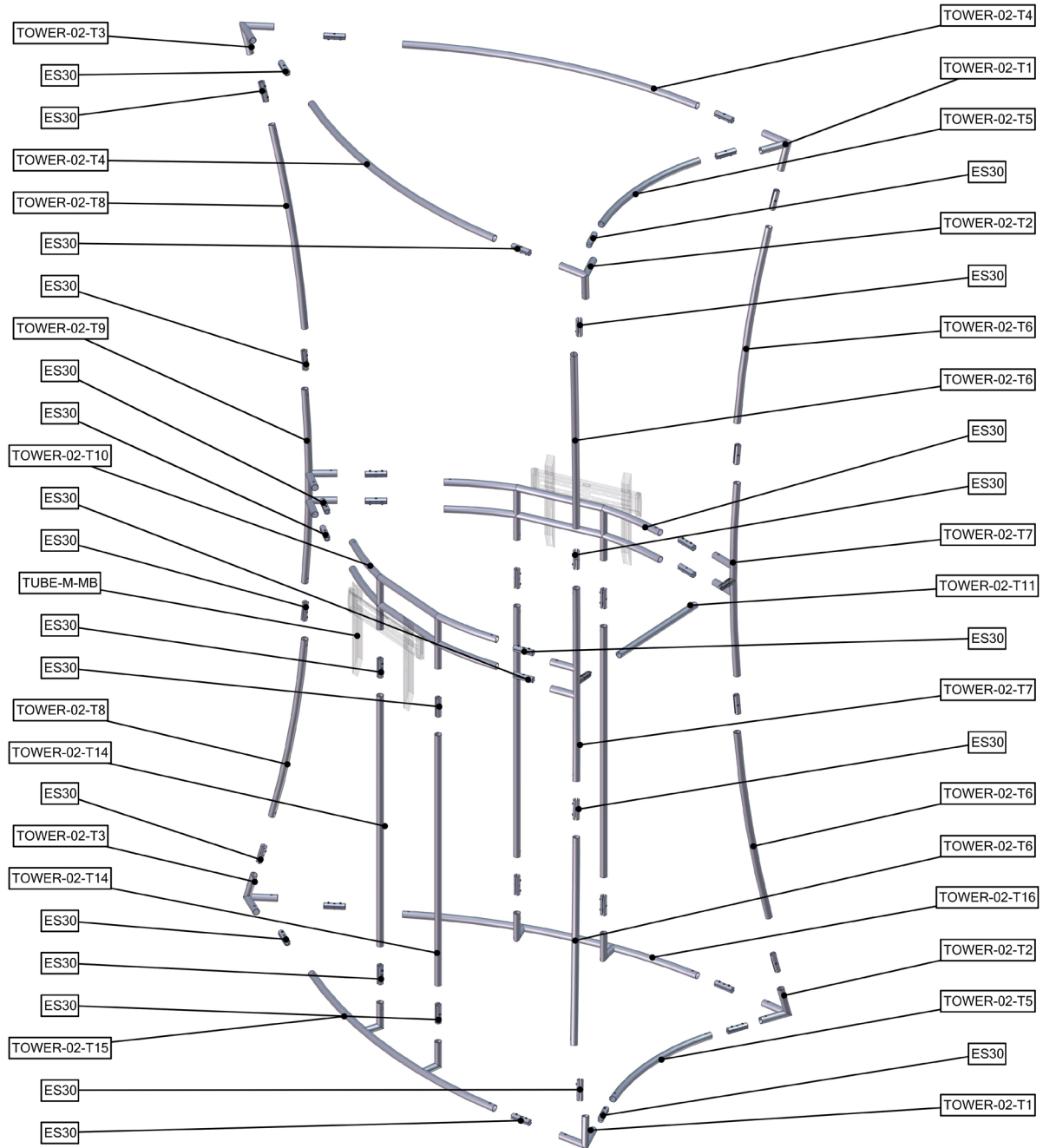
TOWER-02-T15 x1



TOWER-02-T16 x1

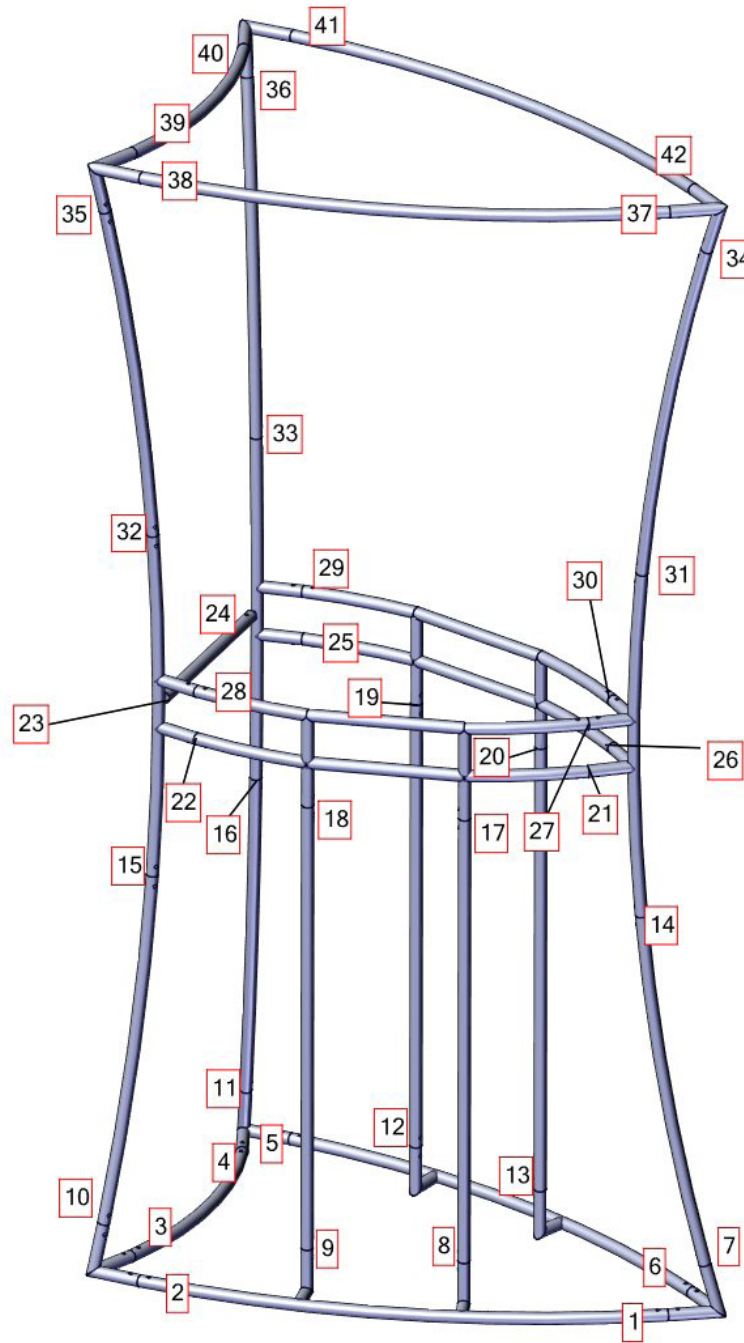
# Exploded View

## TOWER-03



# Labeling Diagram

TOWER-03





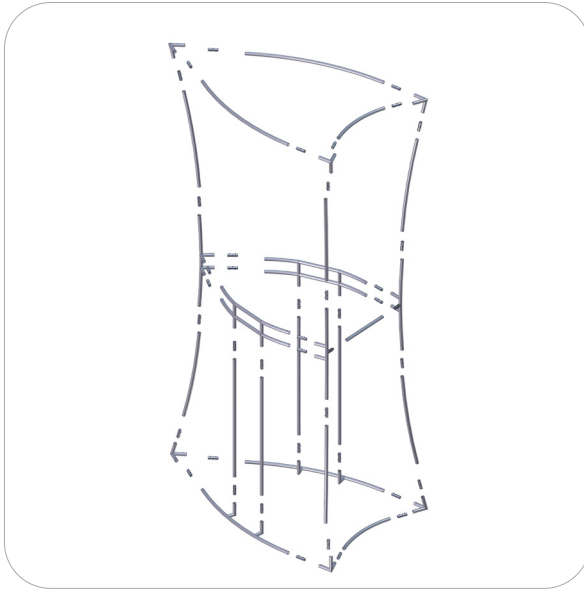
# Kit Assembly

## Step by Step

### Step 1.

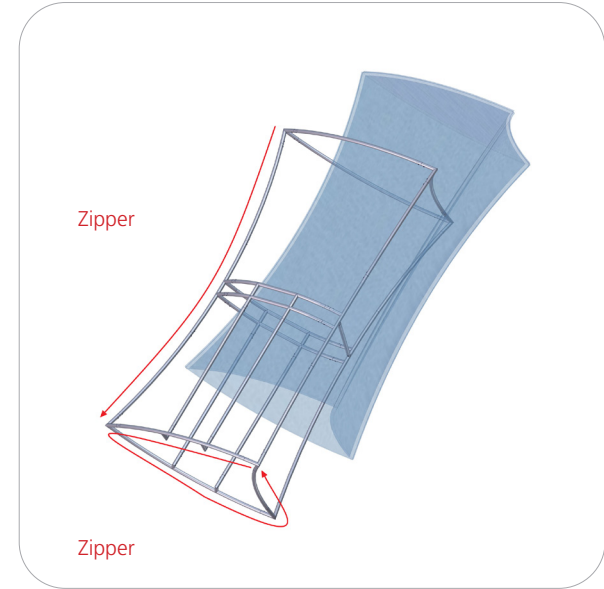
Gather the components necessary for assembling the frame. Assemble in the order the Labeling Diagram instructs.

Reference Connection Method 1 for more details.



### Step 2.

With the frame laying flat on the floor, locate your pillowcase graphic. With the pillowcase unzipped, encase the frames and zip along the side and bottom.

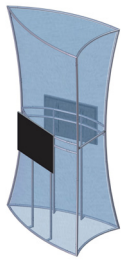


### Step 3.

Attach your monitor mounts through the graphic to the top center tubes of both sides of the frame.

Refer to the Monitor Bracket Instruction pages for more details.

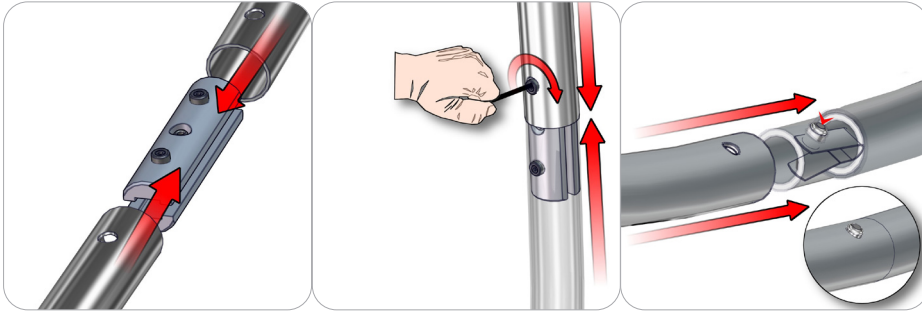
Setup is complete



# Connection Methods

## Connection Method 1: ES30 / SNAP BUTTONS

---



For spigot connections, compress the unlocked connector and slide into the tube lock access hole. Lock both screws carefully using your allen key tool. Be sure to lock securely, but do not over tighten. For snap button connections, locate the snap button on the connector or swage tube. Locate the hole on the corresponding tube. Press the snap button with your thumb and slide the tube and connector together so that the snap button snaps fully into the lock hole. To disassemble, press the snap button and pull apart.

---

# Monitor Bracket Instructions

## Tube Applications



### TUBE-SM-MB

Sizes: 17" - 37"

Max weight varies per application

**Assembled unit:**

9" w x 16" h x 1.4" d  
230mm (w) x 410mm (h) x 35mm (d)

**Shipping dimensions:**

14" l x 6" h x 4" d  
356mm (l) x 152mm (h) x 102mm (d)

**Approximate total shipping weight:**

6 lb / 2.7 kg

**VESA:**

75 x 75 - 200 x 200mm



### TUBE-M-MB

Sizes: 32" - 55"

Max weight varies per application

**Assembled unit:**

16" w x 16" h x 1.4" d  
410mm (w) x 410mm (h) x 35mm (d)

**Shipping dimensions:**

24" l x 4" h x 4" d  
610mm (l) x 102mm (h) x 102mm (d)

**Approximate total shipping weight:**

7 lb / 3.2 kg

**VESA:**

100 x 100 - 400 x 400mm



### TUBE-LG-MB

Sizes: 40" - 65"

Max weight varies per application

**Assembled unit:**

24" w x 16" h x 1.4" d  
610mm (w) x 410mm (h) x 35mm (d)

**Shipping dimensions:**

28" l x 6" h x 6" d  
711mm (l) x 152mm (h) x 152mm (d)

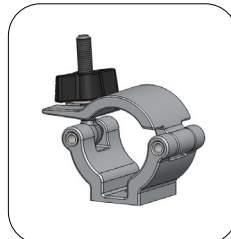
**Approximate total shipping weight:**

8 lb. / 3.6 kg

**VESA:**

100 x 100 - 600 x 400mm

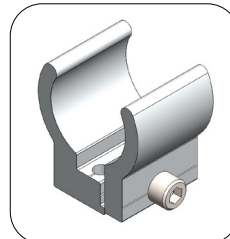
## Included hardware:



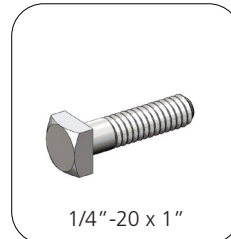
ACC60 x2



TCH-30 x2

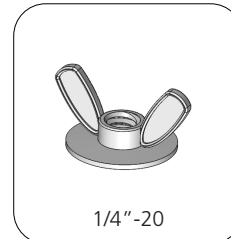


TC-30MM-SILVER x2



1/4"-20 x 1"

BOLT-1 x4

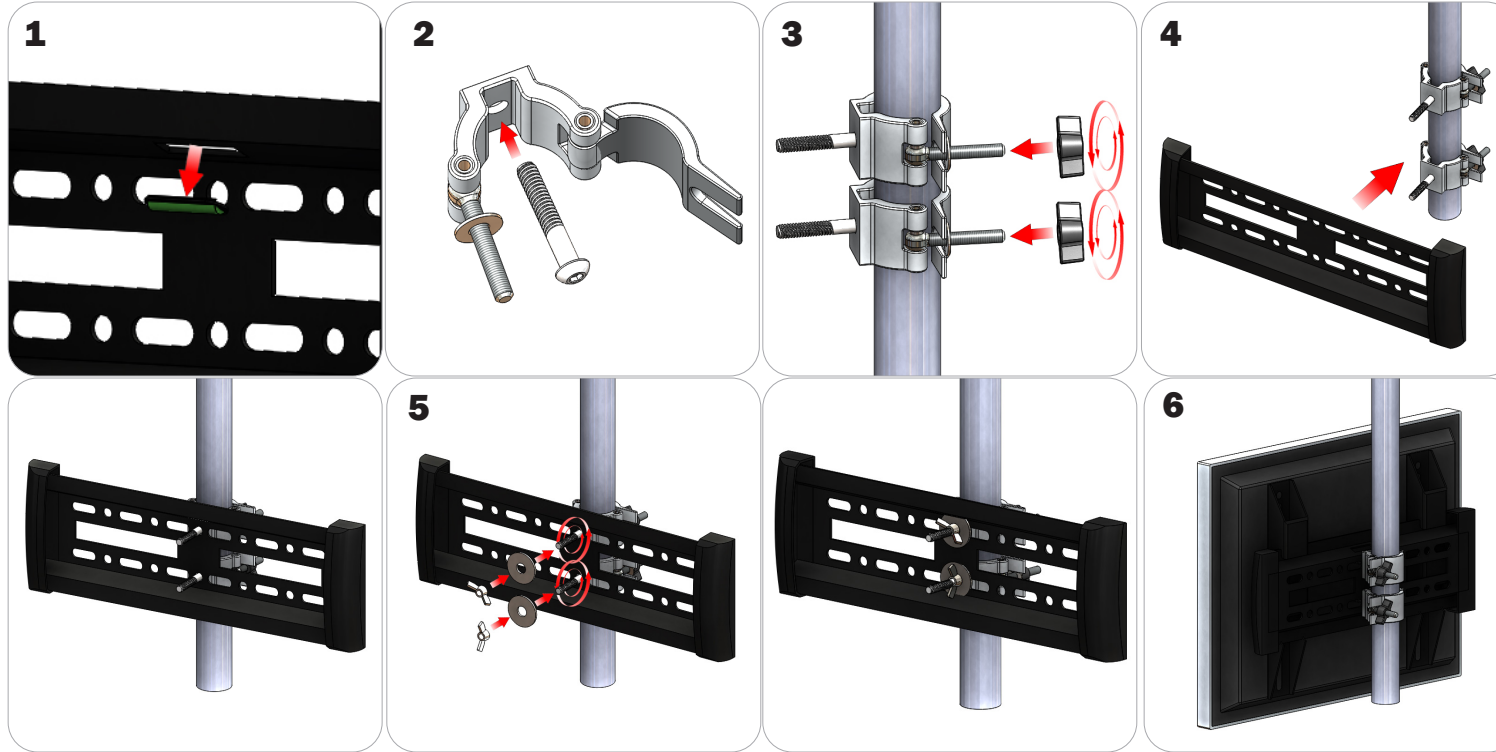


1/4"-20

Flange Wing nut x4

# Tube Connection

## ACC60 Clamp Connection



Locate all components needed to assemble the monitor mount with the ACC60 tube method. You will need (1) monitor bracket, (2) ACC60 clamps, (2) washers, and (2) wing nuts.

**Step 1:** Apply pressure to the rear side of the leveling gauge clipped into the monitor mount to remove it.

**Step 2:** Push the provided bolt through the hole in the ACC60 and place the ACC60 in the desired location.

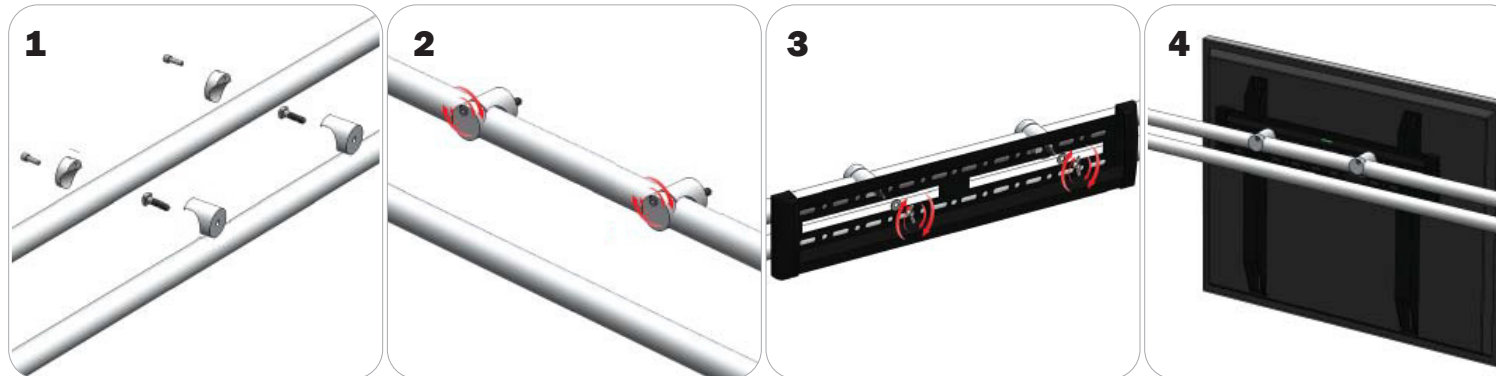
**Step 3:** Tighten the clamp to the tube using the plastic wing nut.

**Step 4:** Set your monitor bracket onto the protruding bolts using the of the ACC60 using the center holes on the monitor bracket., adjust ACC60 position if necessary.

**Step 5:** Lock your monitor bracket to the ACC60s by placing your washers and locking with provided wing nuts.

**Step 6:** Reference the included manufacturer monitor mount instructions for fastening your monitor to the bracket.

## TCH Clamp Connection



Locate all components needed to assemble the monitor mount with the TCH tube method. You will need (1) monitor bracket, (2) TCH clamps, (2) bolts, (2) washers, and (2) wing nuts.

Determine your desired monitor location.

**Step 1:** Fit the provided bolts through the TCH clamps then reassemble the clamp.

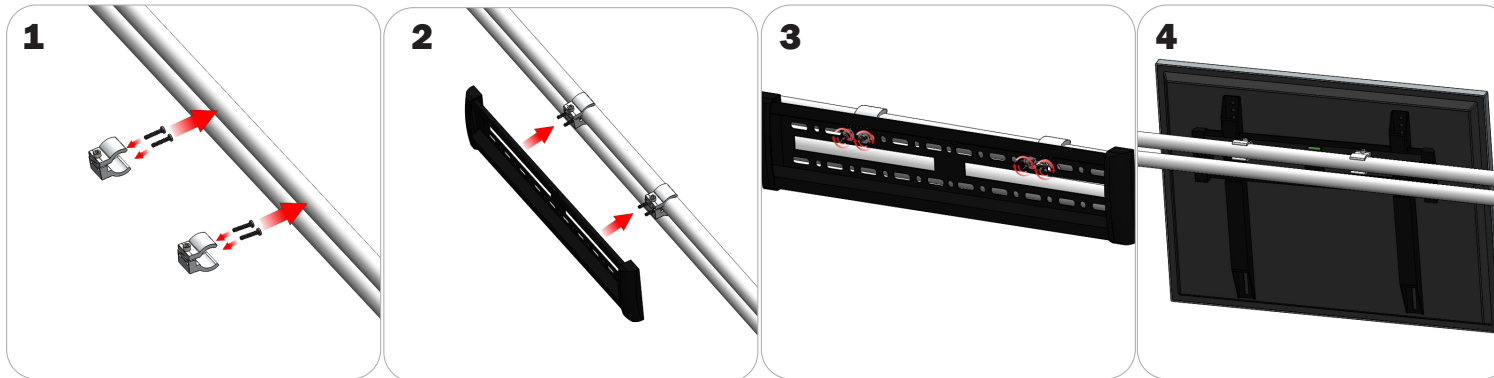
**Step 2:** Lock the clamp onto the tube with the allen head screws on the clamp.

**Step 3:** Align your monitor bracket so that the left and right holes slide onto the bolts behind them. Use your washers and wing nuts to lock your monitor bracket in place.

**Step 4:** Reference the included manufacturer monitor mount instructions for fastening your monitor to the bracket.

# Tube Connection

## TC-30 Clamp Connection



Locate all components needed to assemble the monitor mount with the TC-30 tube clamp method. You will need (1) monitor bracket, (2) TC-30-SILVER clamps, (4) BOLT-1 screws, and (4) flange wing nuts.

**Step 1:** Insert the pan-head screws through the holes of your TC-30 clamps. Attach the TC-30 clamps to the tubes but do not tighten.

**Step 2:** Set your monitor bracket onto the protruding pan-head screws on your clamps using the holes in the monitor bracket.

**Step 3:** Apply your flange wing nuts to the front of your monitor bracket to lock it to the clamps. Lock your clamps securely into place.

**Step 4:** Reference the included manufacturer monitor mount instructions for fastening your monitor to the bracket.

# Formulate C-Shaped Wall

## C-WALL

Formulate® tension fabric conference walls are lightweight, stylish solutions to your meeting space needs. Ergonomically designed, Formulate C-shaped and Serpentine shaped walls combine the latest developments in fabric printed technology with gently curved 50mm aluminum frames to create private, cozy and stylish conference areas within any space.



## features and benefits:

- State-of-the-art 50mm curved aluminum tube frame with sturdy internal spigots
- Perfect for a small table and chairs or benches for seating
- Create a stylish, semi-private space
- Kit includes: one frame, one dye-sublimated zipper pillowcase graphic, and one wheeled molded storage case
- Lifetime hardware warranty against manufacturer defects

## component dimensions:

### Hardware

Assembled unit:  
89.59" w x 84" h x 60" d  
2276mm(w) x 2133mm(h) x 1526mm(d)

Approximate weight:  
42 lbs / 19 kg

### Graphic

Refer to related graphic template for more information.

Visit:  
[www.exhibitors-handbook.com/graphic-templates](http://www.exhibitors-handbook.com/graphic-templates)

## additional information:

Graphic material:  
Dye-sublimation zipper pillowcase fabric

When included in a larger kit, a different packaging solution will be listed to accommodate all contents of the kit. Individual packaging no longer provided.

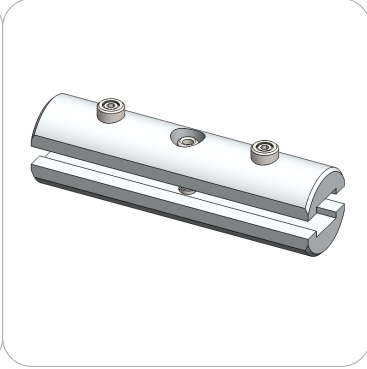
We are continually improving and modifying our product range and reserve the right to vary the specifications without prior notice. All dimensions and weights quoted are approximate and we accept no responsibility for variance. E&OE. See Graphic Templates for graphic bleed specifications.

# Included In Your Kit

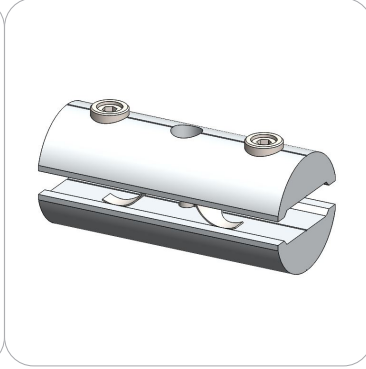
## Tools, Components, & Connectors



HEX KEY SET x1

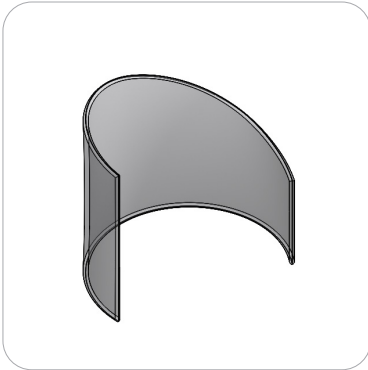


ES30 x3



ES50 x9


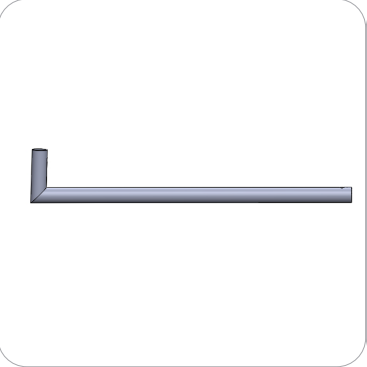
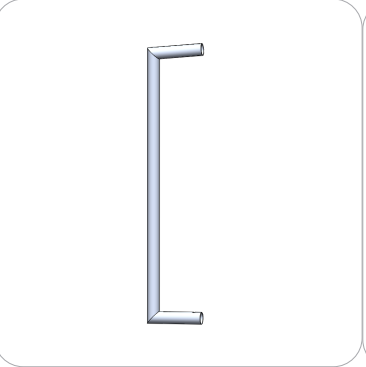
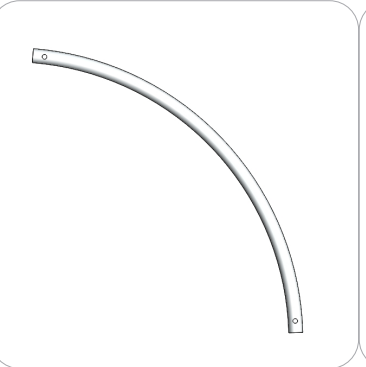
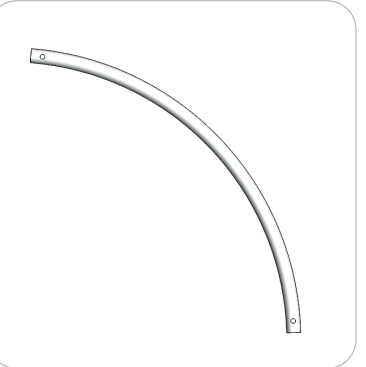
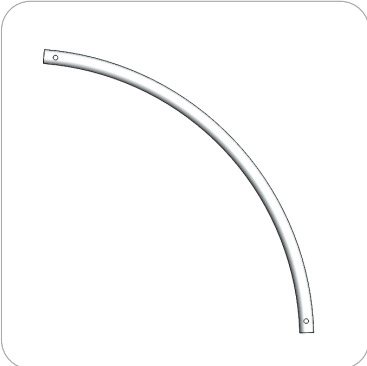
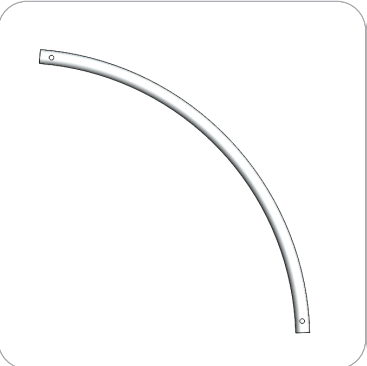

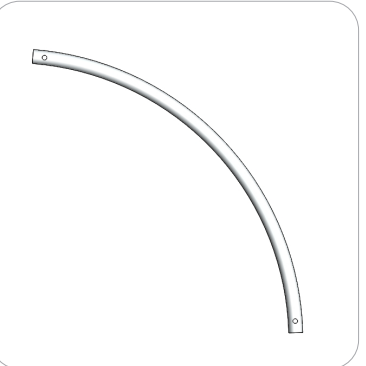
## Graphics



C-WALL-GDBL x1

# Included In Your Kit

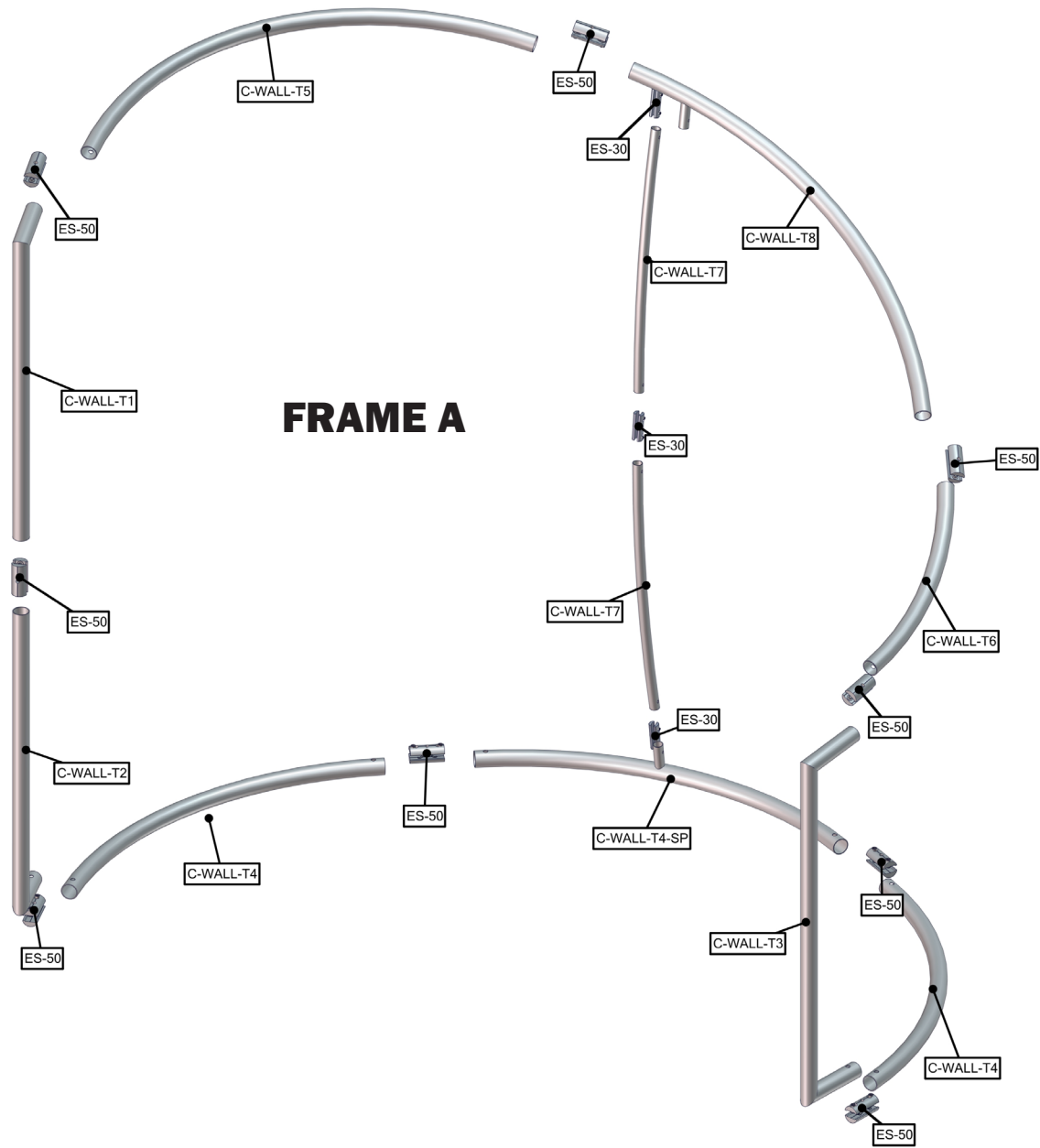
**Tubes**

				
C-WALL-T1 x1	C-WALL-T2 x1	C-WALL-T3 x1	C-WALL-T4 x2	C-WALL-T4-SP x1
				
C-WALL-T5 x1	C-WALL-T6 x1	C-WALL-T7 x2	C-WALL-T8 x1	



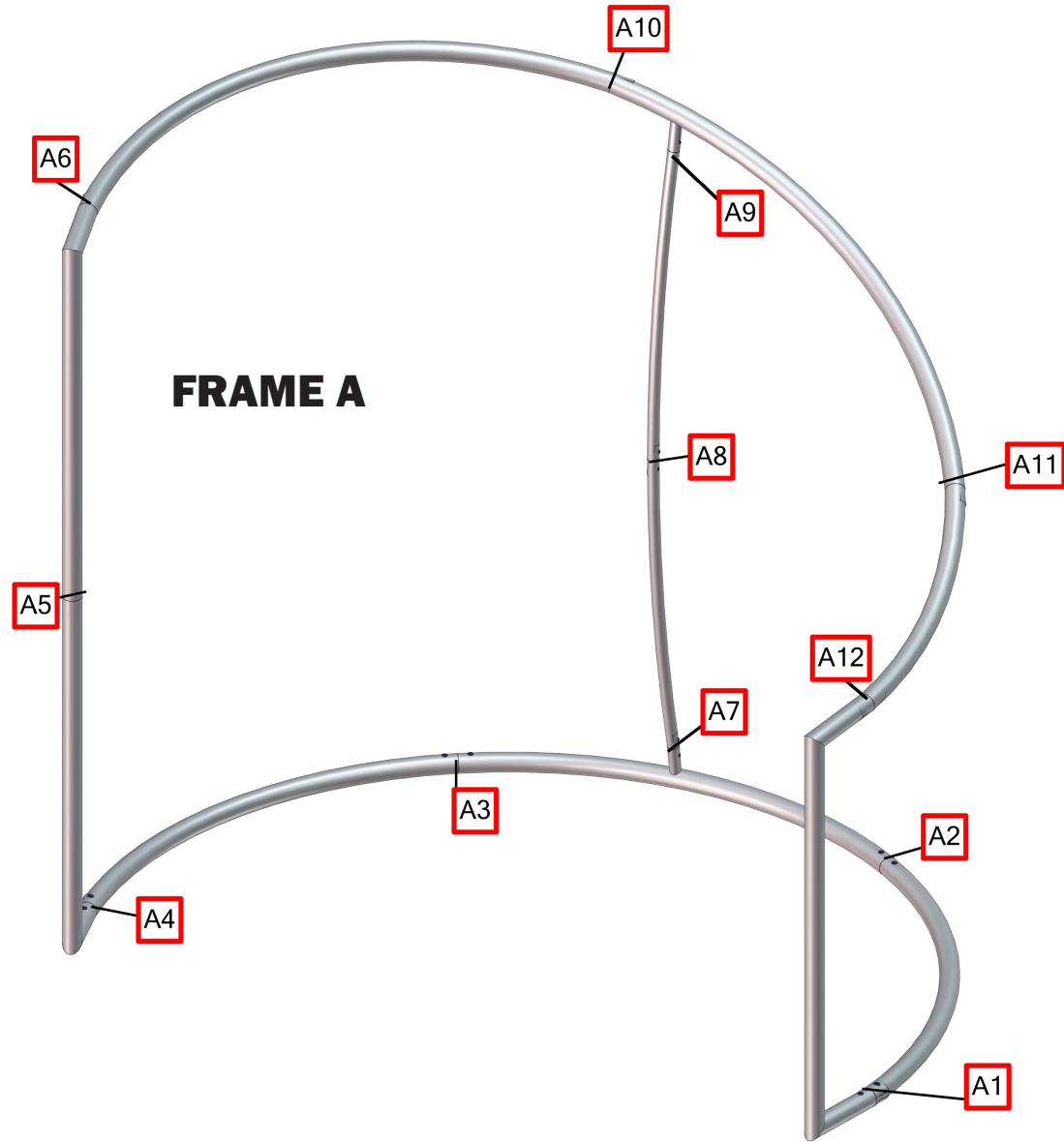
# Exploded View

C-WALL



# Labeling Diagram

C-WALL



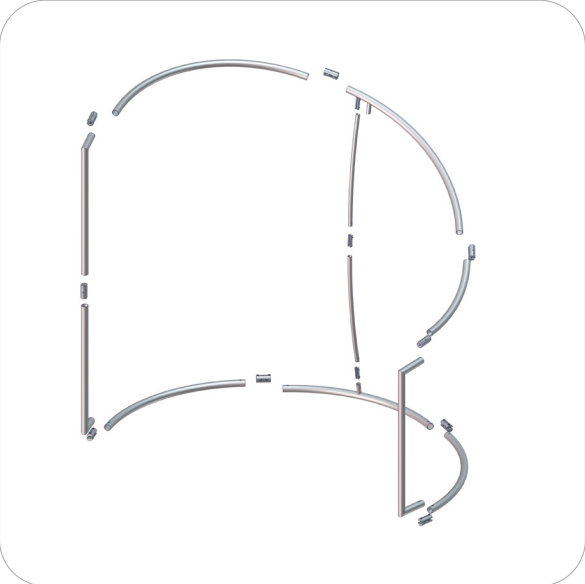
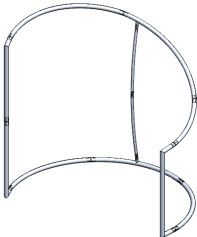
# Kit Assembly

## Step by Step

### Step 1.

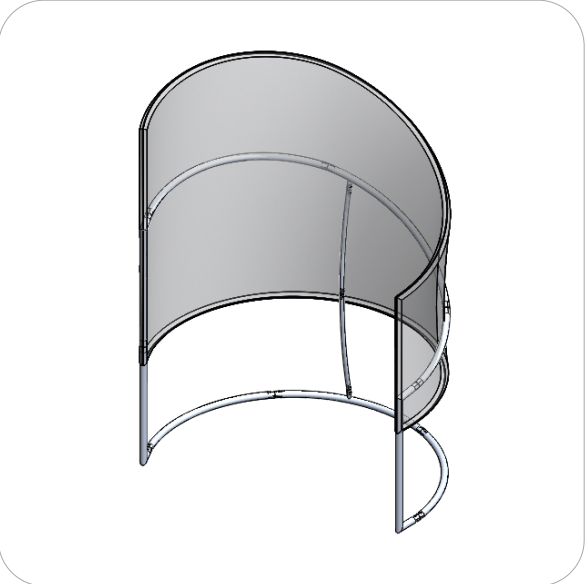
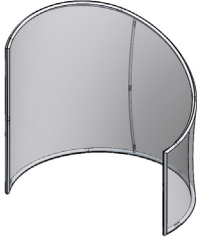
Gather the components necessary for assembling the frame and lay them flat on the floor. Assemble in the order the Labeling Diagram instructs.

Please reference Connection Method 1 for more details.



### Step 2.

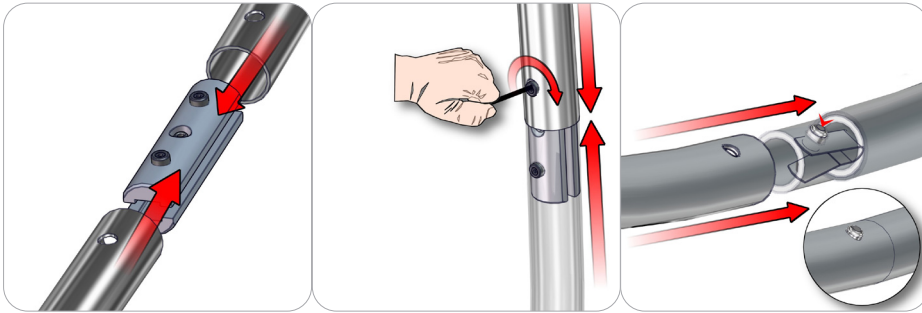
With the frame laying flat on the floor, locate your pillowcase graphic. With the pillowcase unzipped, encase the frame by covering the frame from top to bottom.



# Connection Methods

## Connection Method 1: ES30 / ES50 / SNAP BUTTONS

---



For spigot connections, compress the unlocked connector and slide into the tube lock access hole. Lock both screws carefully using your allen key tool. Be sure to lock securely, but do not over tighten. For snap button connections, locate the snap button on the connector or swage tube. Locate the hole on the corresponding tube. Press the snap button with your thumb and slide the tube and connector together so that the snap button snaps fully into the lock hole. To disassemble, press the snap button and pull apart.

# Formulate Counter - Pillar

## W-01-C

Formulate® counters couple lightweight hardware with printed stretch silicone edge fabric graphics (SEG) to create funky and functional reception stands. Tables and bases are available in four colored finishes – silver, black, mahogany and natural. Custom sizes also available.



## features and benefits:

- Printed stretch silicone edge fabric graphics (SEG) for a custom look
- Counter supports 25 lbs of weight on center
- Choice of four finishes for table and base
- Kit includes: dye-sublimated fabric graphic, top and base, and one wheeled molded storage case
- Optional Lighting is available
- Lifetime hardware warranty against manufacturer defects

## component dimensions:

### Hardware

Assembled unit:  
31.5" w x 38" h x 15.75" d  
800mm(w) x 970mm(h) x 400mm(d)

Approximate weight:  
28 lbs / 13 kg

### Graphic

Refer to related graphic template for more information.

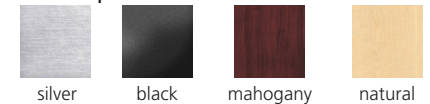
Visit:  
[www.exhibitors-handbook.com/graphic-templates](http://www.exhibitors-handbook.com/graphic-templates)

## additional information:

Graphic material:  
Dye-sublimation SEG push-fit fabric

When included in a larger kit, a different packaging solution will be listed to accommodate all contents of the kit. Individual packaging no longer provided.

### Tabletop/Base Colors:

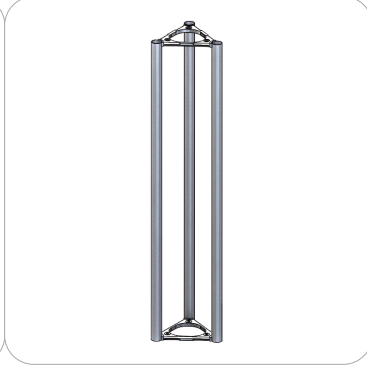


# Included In Your Kit

Tools, Components, & Connectors



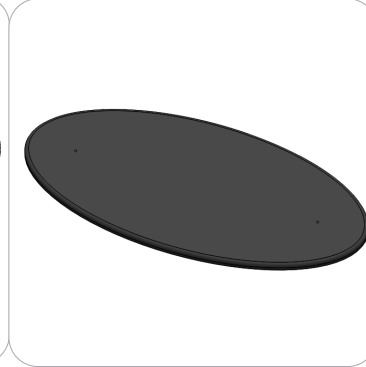
HEX KEY SET x1



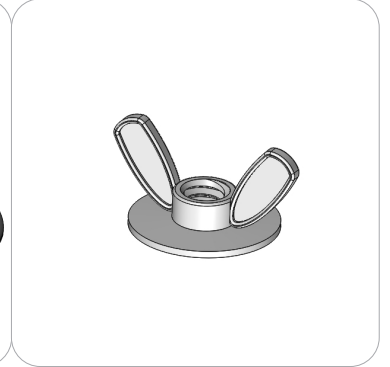
TRI30-COUNTER x1



W-01-C-TOP x1



W-01-C-BASE x1



5/16-18 Wing Nut x6



1.25" Stud x3



2" Stud x3

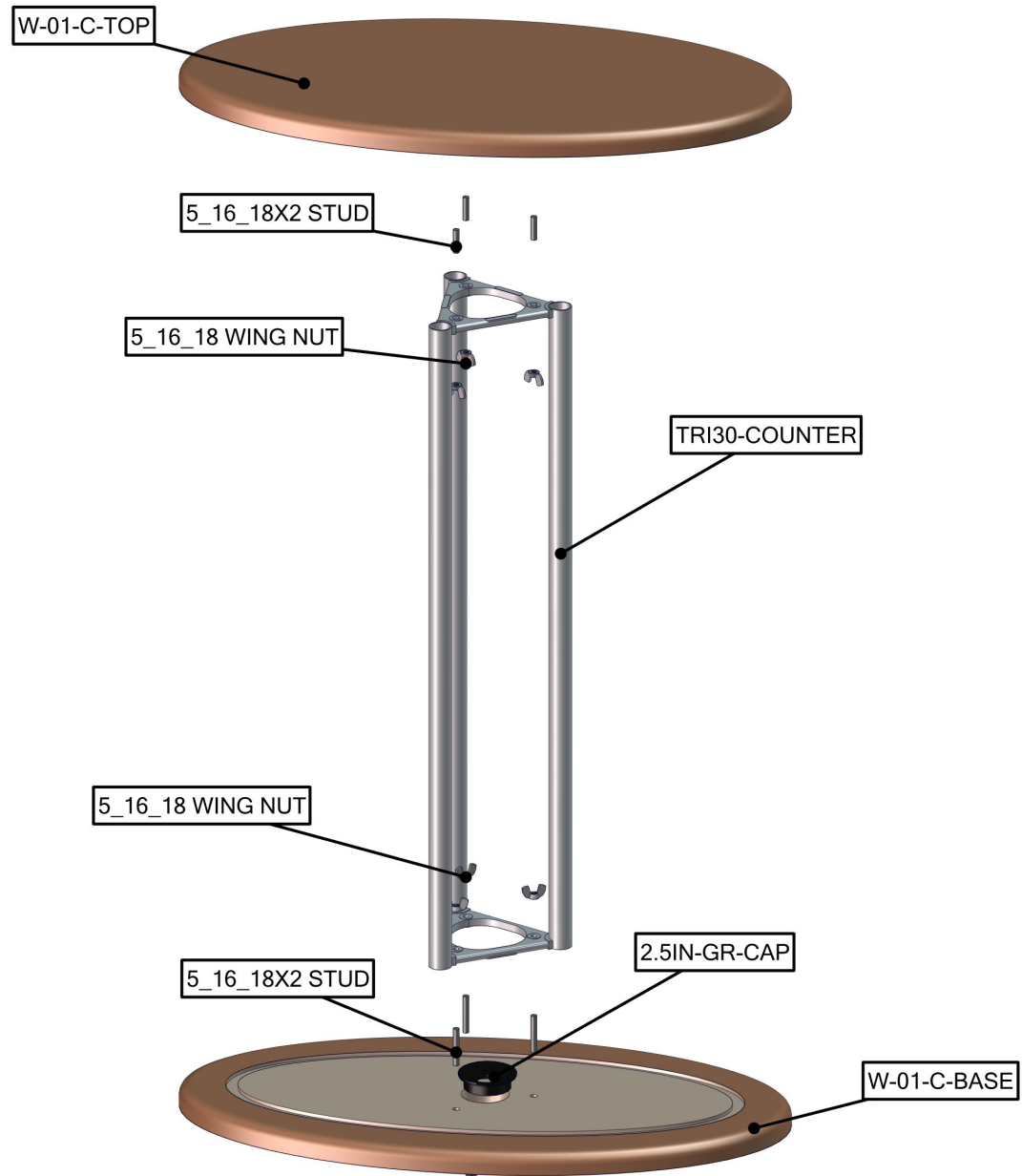
Graphics



W-01-C-G x1

# Exploded View

W-01-C



# Kit Assembly

## Step by Step

### Step 1.

Begin by threading your 2" studs through the holes of the base. Attach your TRI30-COUNTER support beam and secure using (3) wingnuts.

Reference Connection Method 1 for more details.



### Step 2.

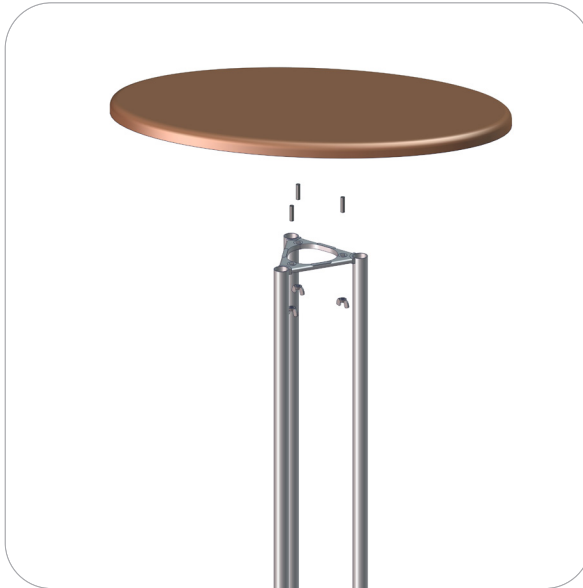
Pull your graphic over TRI30-COUNTER beam and push the edges into the seams of the base.

Reference Connection Method 2 for more details.



### Step 3.

Thread the 2" studs into the counter top. Align the counter top so that the studs fall through the holes of the TRI30-COUNTER beam. Secure the counter top using the remaining (3) wingnuts.



### Step 4.

Push the top edges of the graphic into the seams of the counter top to complete your assembly.

Reference Connection Method 2 for more details.

If optional lighting has been purchased move on to step 5, otherwise Setup is Complete.





# Kit Assembly

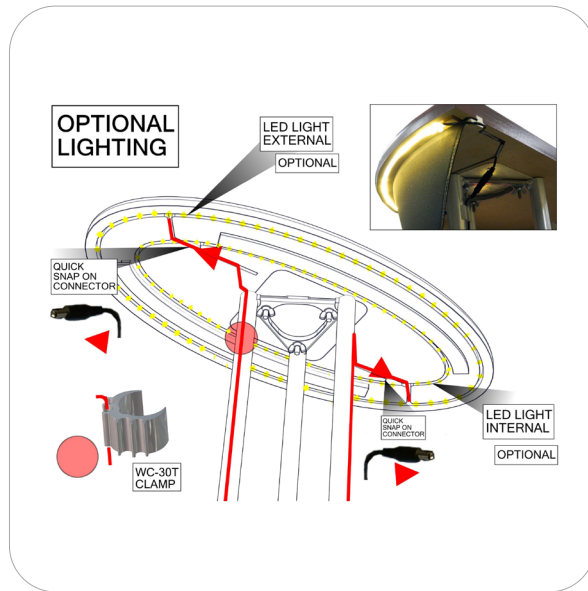
## Step by Step

### Step 5.

Apply lighting to underneath the tabletop.

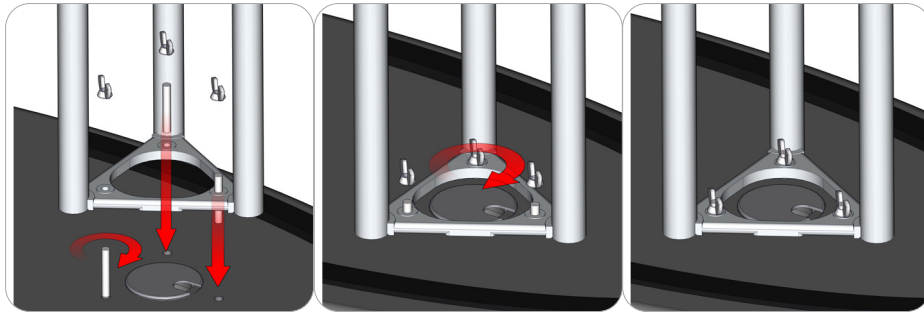
Reference Connection Method 3 for more details.

Setup is complete.



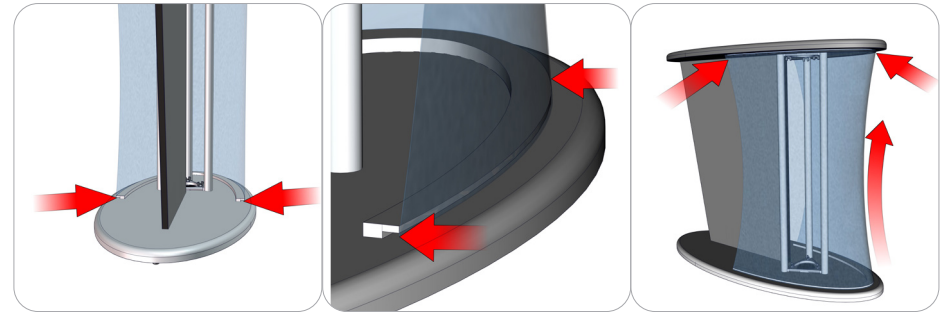
# Connection Methods

## Connection Method 1: SET SCREW / WING NUT / TRI30-COUNTER



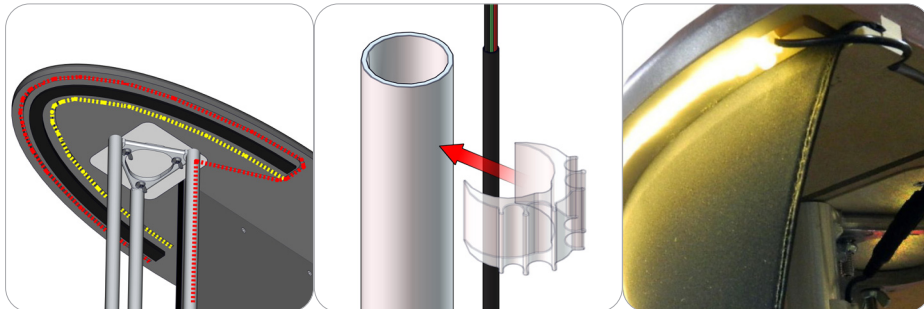
First, turning clock-wise, place the set screws into the wooden base and top. You can use your provided allen key for tight turns. Second, lay the TRI30-COUNTER in place making sure there is enough of the set screws protruding out. Turn set screws counter-clock-wise to gain exposure. Third, finish the attachment with the flanged wing nuts. Turn them cock-wise and make they are snug.

## Connection Method 2: SILICONE EDGE FABRIC GRAPHIC



First, take the bottom edge of the silicone edge fabric graphic and press fit into the base wooden channel. Start at the ends of the channel and work your way in. Second, pull the silicone edge fabric top end into the wooden channel of the counter top. Again, start at the ends of the channel and work your way in. This fabric is able to stretch and is easily adjustable to reduce ripples in the graphic.

## Connection Method 3: OPTIONAL LED

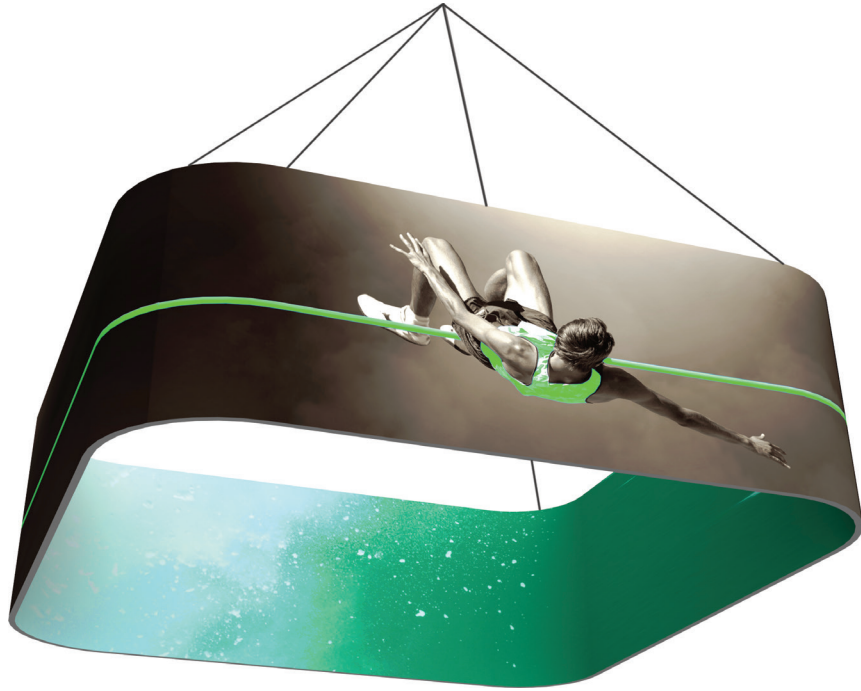


First, determine if the LED beads are going to be installed on the inside (yellow) track or outside (red) track of the counter top. Second, once the LED beads are in place, use WC-30T's to hold the power cable on the TRI30-COUNTER tubes. There will be a grommet hole on the base to wire the cable through.

# Formulate Master 3D Hanging Structures: Rounded Square

## RNDSQU

Formulate® tension fabric hanging structures are made in the USA and are of the utmost quality and durability. Formulate combines state-of-the-art zipper pillowcase dye-sublimated stretch fabric coverings with advanced, lightweight aluminum structures to provide unique design, functionality, and style.



We are continually improving and modifying our product range and reserve the right to vary the specifications without prior notice. All dimensions and weights quoted are approximate and we accept no responsibility for variance. E&OE. See Graphic Templates for graphic bleed specifications.

## features and benefits:

- Four sided hanging structures come in varying heights of 2', 3', 4', 5' & 6'
- Shapes 12' wide and under are constructed with 30mm (1.25") tubes and push button connectors for simple assembly
- Shapes 14' and over are constructed with 50mm (2") tubes and internal expanding spigot connectors for unmatched structural integrity
- Easy to store and ship
- Quick to set up
- One zipper pillowcase fabric graphic
- Lifetime limited hardware warranty against manufacturer defects

## component dimensions:

### Hardware

### Assembled unit:

(8', 10', 12', 14', 16', 18' or 20')w x (2', 3', 4', 5', or 6')h

(2.44, 3.05, 3.66, 4.27, 4.88, 5.49, or 6.1)m(w) x (.61, .91, 1.22, 1.52, or 1.83)m(h)

### Approximate weight:

Depending on size, weight varies between:

36 lbs / 17 kg - 203 lbs / 92 kg

### Graphic

Refer to related graphic template for more information.

### Visit:

[www.exhibitors-handbook.com/graphic-templates](http://www.exhibitors-handbook.com/graphic-templates)

## additional information:

### Graphic material:

Dye-sublimation zipper pillowcase fabric

### 3 person assembly recommended:

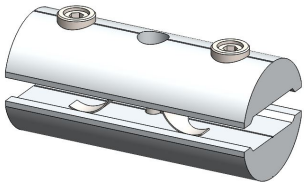


# Included In Your Kit

Tubes, Components & Connectors



EYEBOLT x8



ES50 x24



RNDQU-16-T1 x8



RNDQU-16-T2 x8



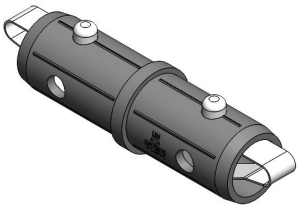
RNDQU-16-T3 x8



RNDQU-16-T4 x8



SPDR-30-S2-6 x24



TC-30-S x12

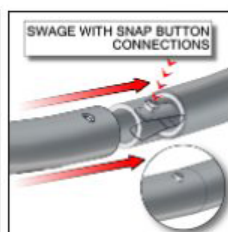
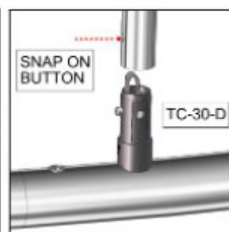
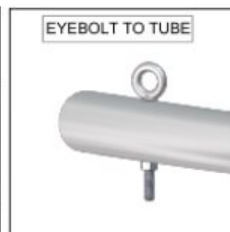
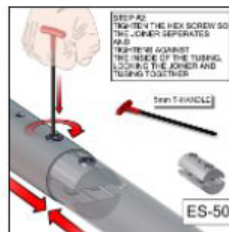
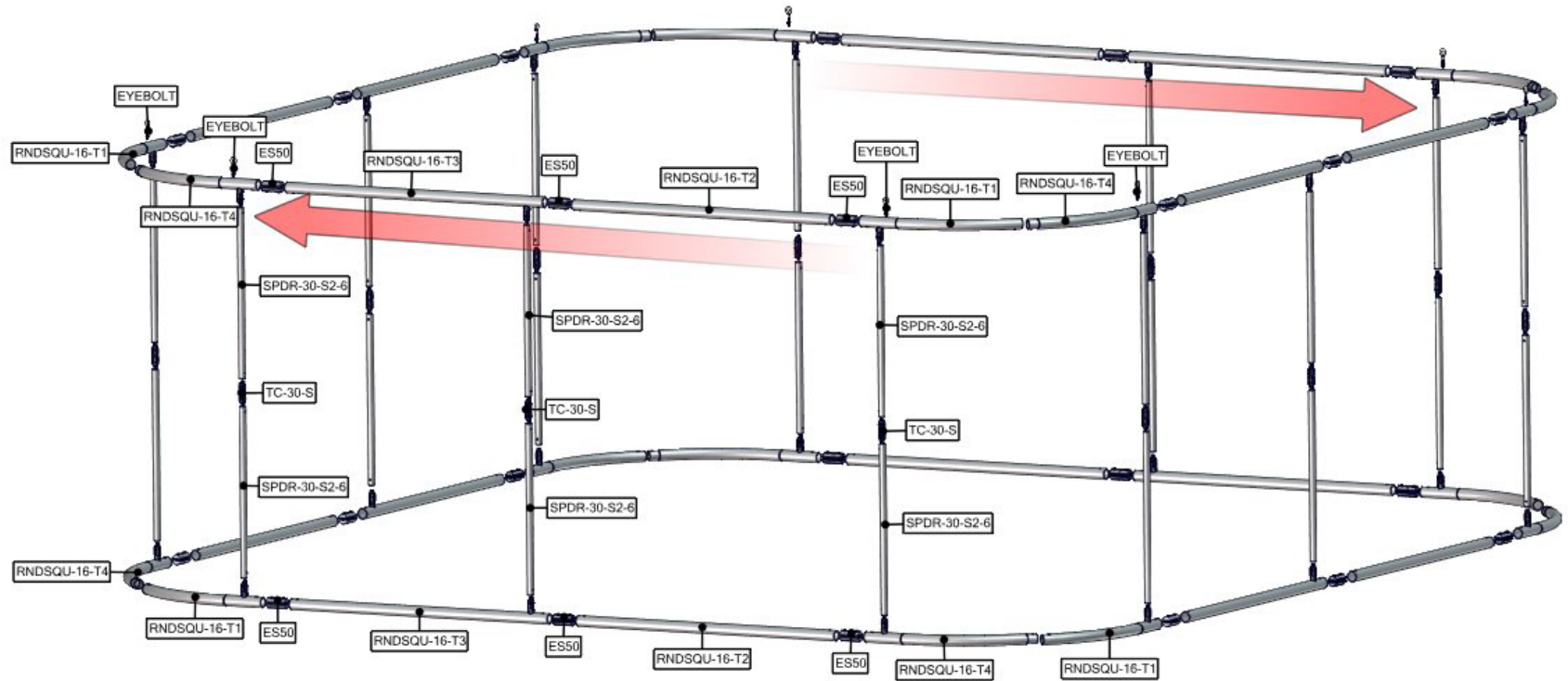
Graphics



RNDQU-1606-G x1

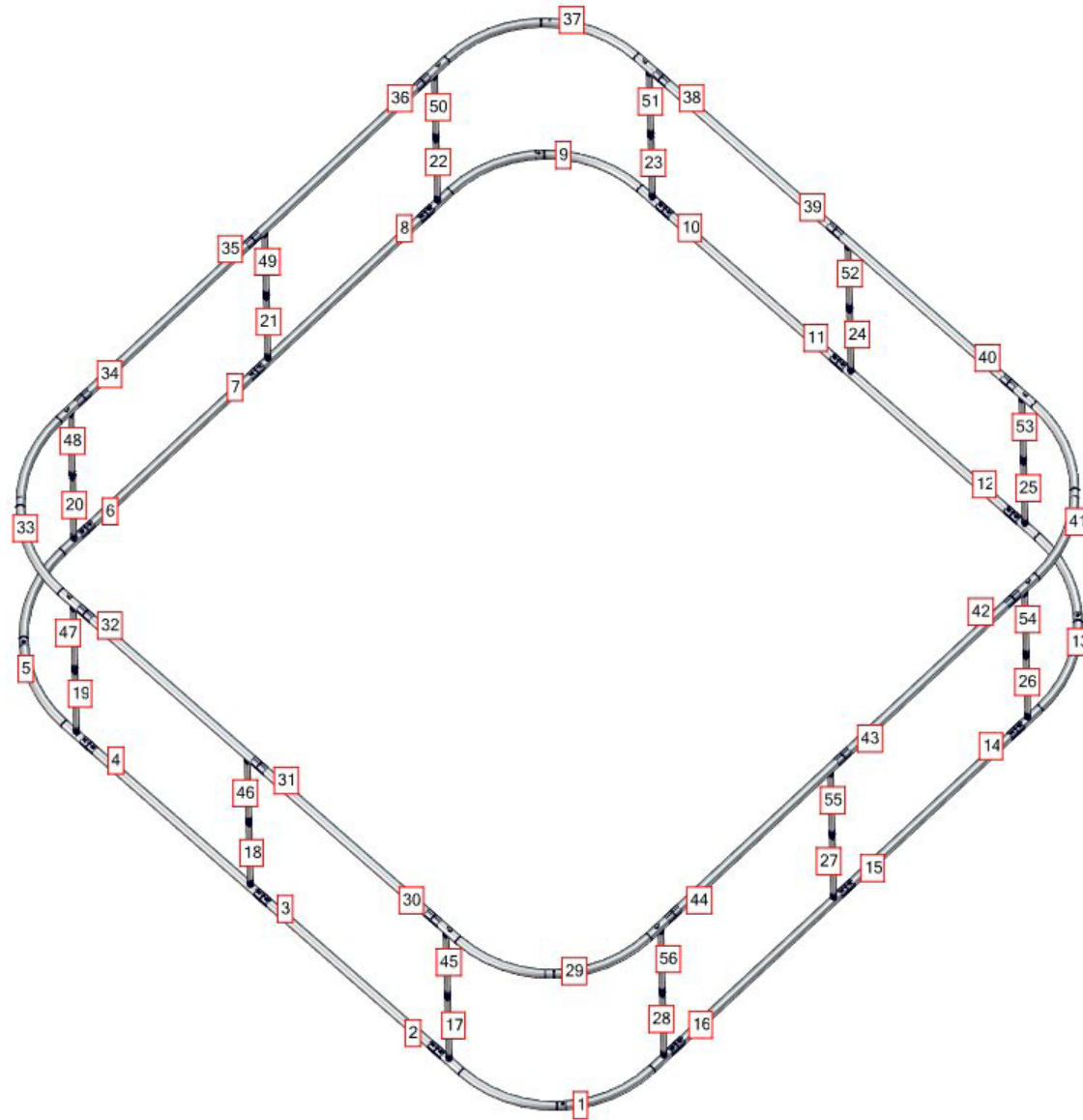
# Exploded View

RNDSQU-1606



# Labeling Diagram

RNDSQU-1606



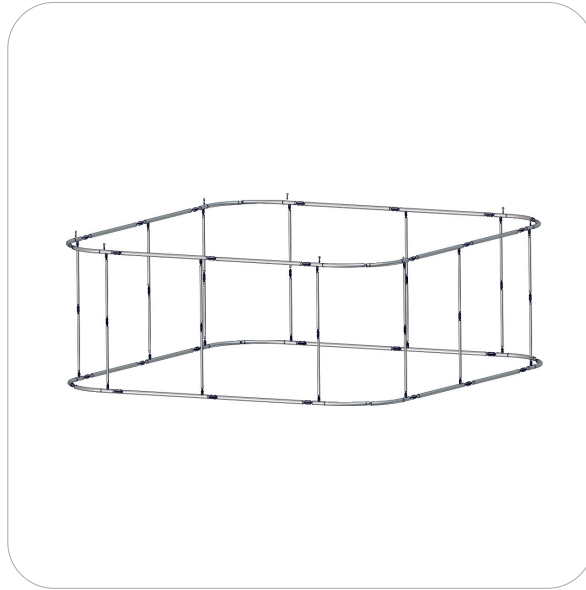
# Kit Assembly

## Step by Step:

### Step 1.

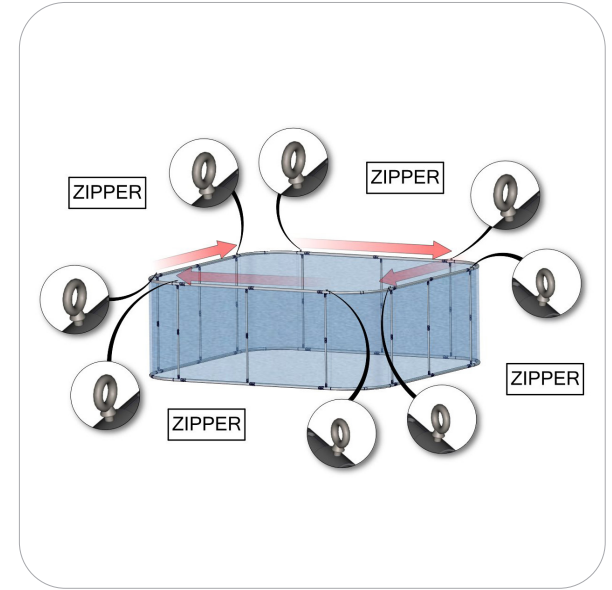
Locate the components necessary for assembling the frame referenced in the exploded view page.

Please reference Connection Method 1 for more details.



### Step 2.

Apply the graphic pillowcase around the frame from the bottom and then zipper around the top edge.



### Step 3.

The structure is now ready to hang.



#### SET UP INSTRUCTIONS:

1. CONNECT BOTTOM AND TOP TUBES FOLLOWING THE LABELS
2. CONNECT SIDE TUBES
3. CLEAN THE FRAME AND PLACE THEM ON CLEAN PLACE
4. CAREFULLY REMOVE FABRIC COVER FROM BAG
5. PLACE COVER AROUND THE BOTTOM OF THE FRAME
6. PULL COVER CAREFULLY UP TO THE TOP
7. CLOSE ALL ZIPPERS
8. ADJUST FABRIC AROUND THE FRAME
9. CONNECT CABLE HARNESS TO THE EYEBOLTS
10. COMPLETELY TIGHTEN THREADED CONNECTORS

#### BREAK DOWN INSTRUCTIONS:

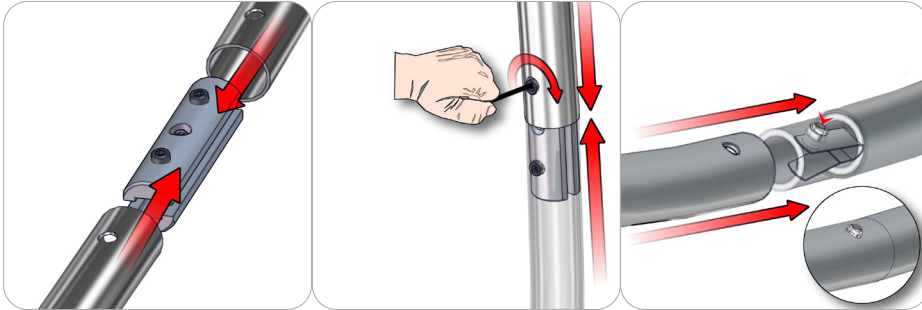
REVERSE SET-UP STEPS TO BREAKDOWN FRAME

#### FABRIC CARE INSTRUCTIONS:

1. UNZIP COVER ZIPPERS
2. CAREFULLY REMOVE FABRIC COVER
3. CLOSE ALL ZIPPERS
4. FOLD OR ROLL NEATLY
5. PLACE FABRIC IN COVER BAG

# Connection Methods

## Connection Method 1: ES30 / ES50 / SNAP BUTTONS



For spigot connections, compress the unlocked connector and slide into the tube lock access hole. Lock both screws carefully using your allen key tool. Be sure to lock securely, but do not over tighten. For snap button connections, locate the snap button on the connector or swage tube. Locate the hole on the corresponding tube. Press the snap button with your thumb and slide the tube and connector together so that the snap button snaps fully into the lock hole. To disassemble, press the snap button and pull apart.