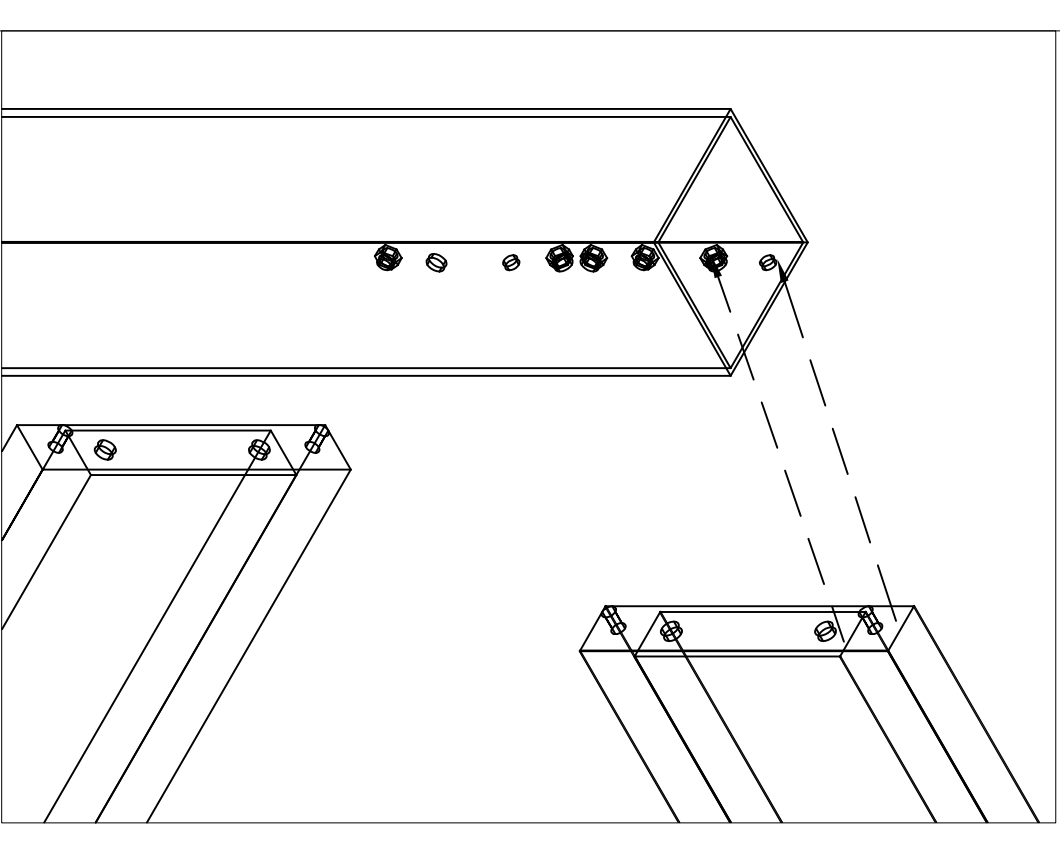
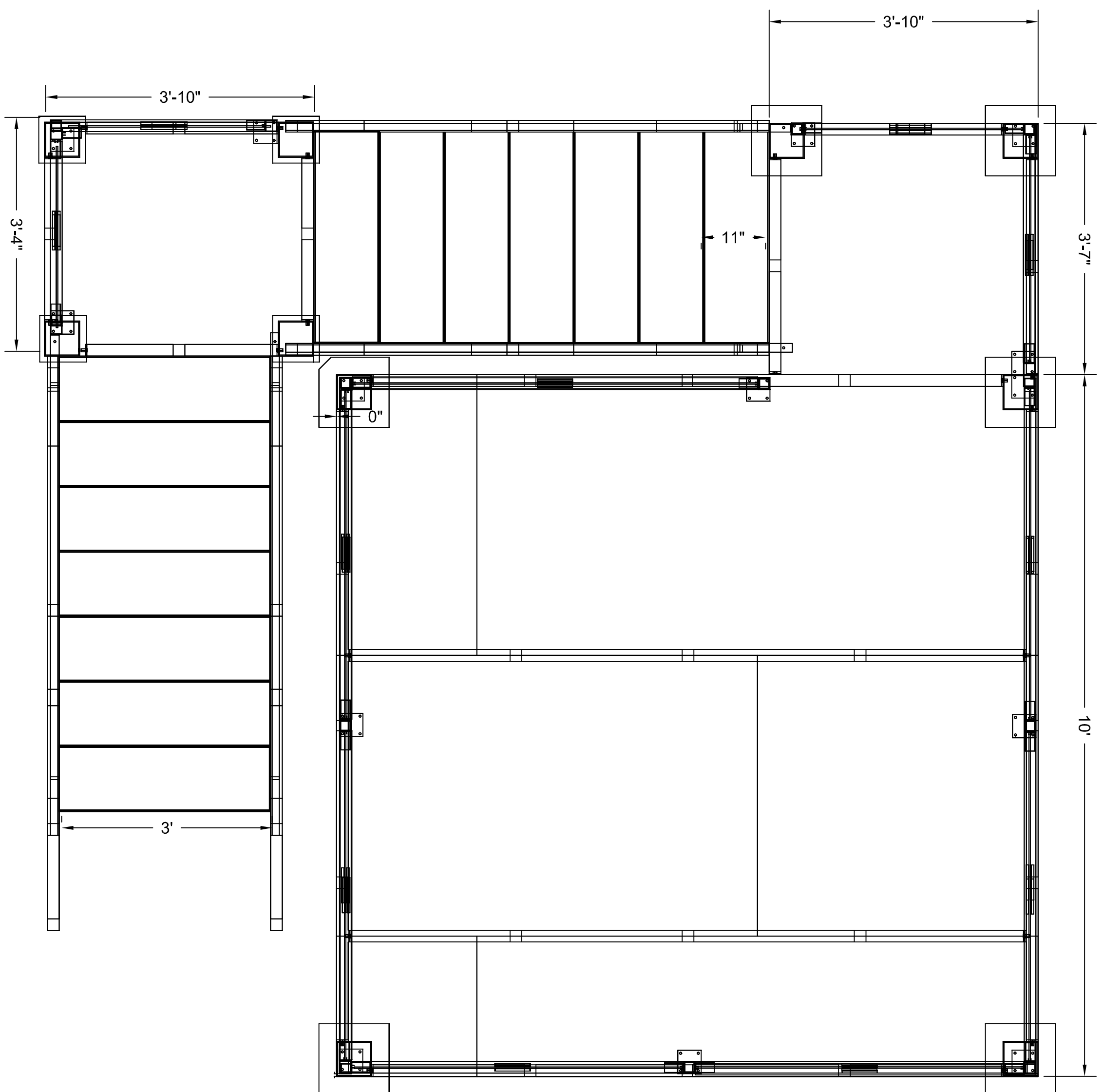


Deck rated @ 125 lbs.
minimum W/ a 9 person
maximum capacity



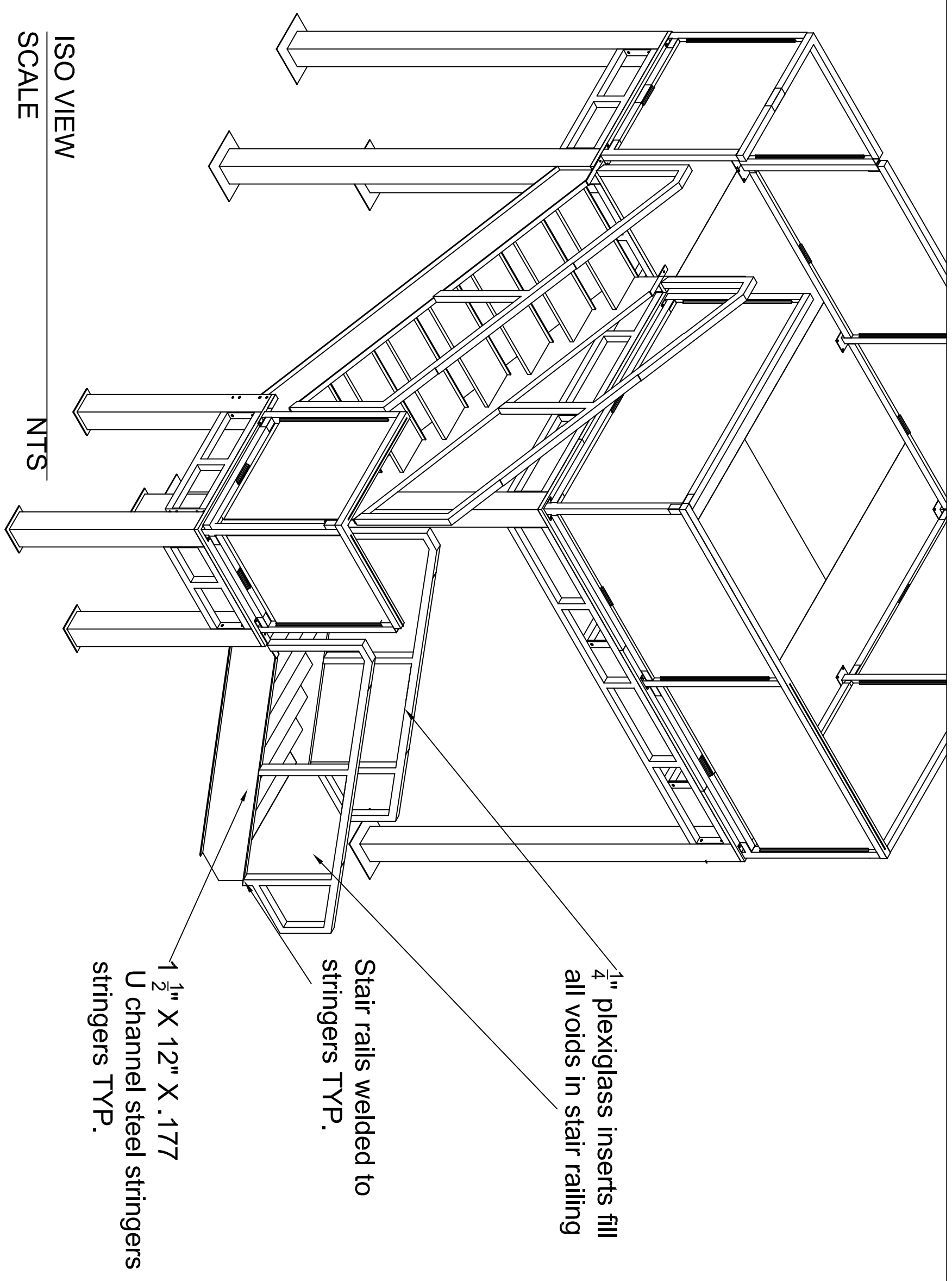
Rim joists connected to columns using 1/2" Ø x 1-1/2" 13 Grade 8 bolts to welded nuts on the 6" x 6" x .177" column.

2 each $\frac{1}{2}$ " cold rolled pins welded to joist that insert into holes in columns

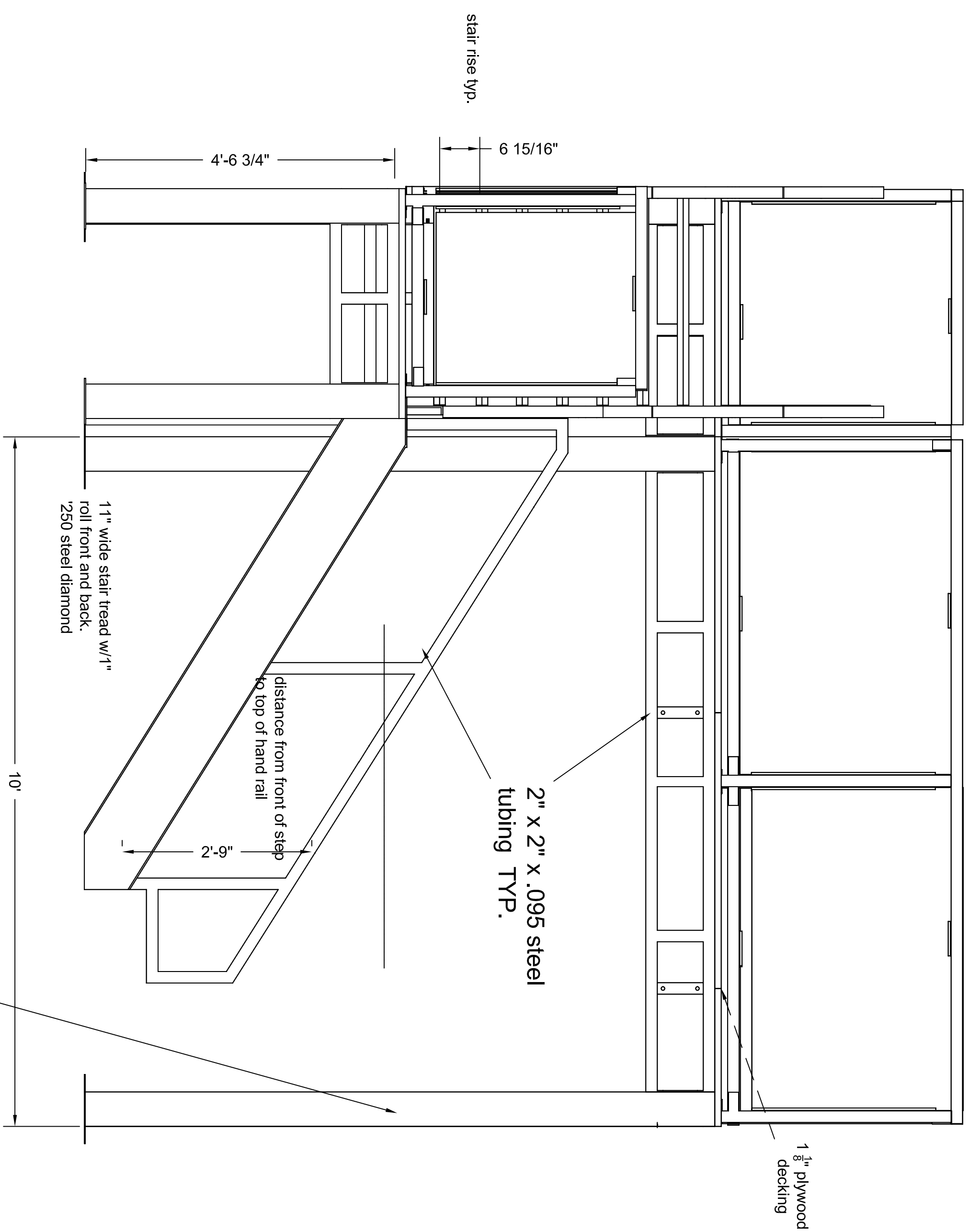


TOP VIEW

SCALE $\frac{3''}{4} = 1'$



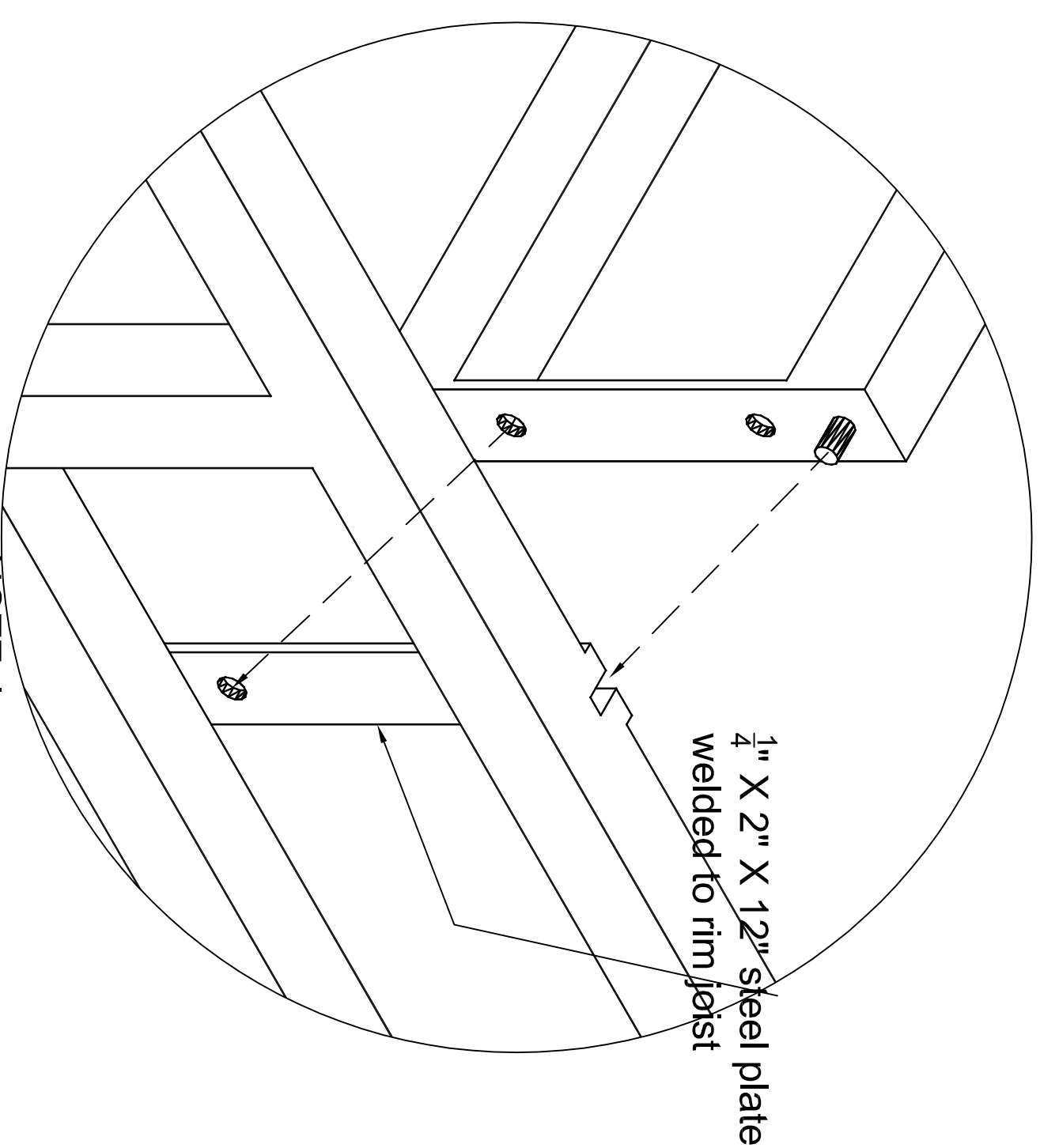
ISO VIEW	NTS
SCALE	



Front view

scale $\frac{3}{4}''=1'$

6" x 6" x .177 steel
legs TYP.
with 12" x .250 sq.
base plate bases

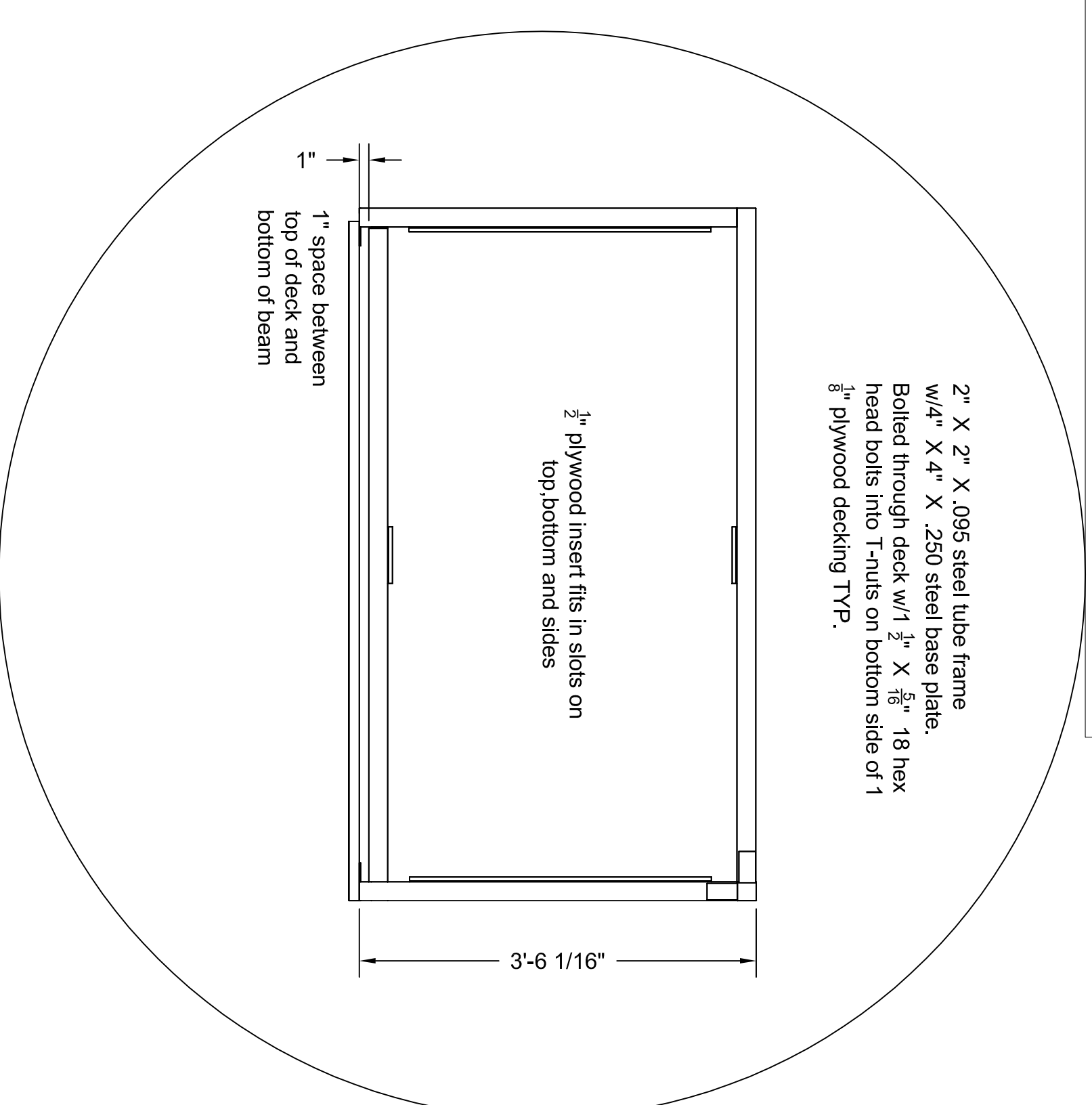


~~1" X 2" X 12" steel plate
welded to rim joist~~

NOTE: in

Both cross joist connected to rim joist w/ $\frac{1}{2}$ " X 1" X 13 grade 8 bolts and nuts.

1 1/2" cold rolled pin welded to joist and rests in slot

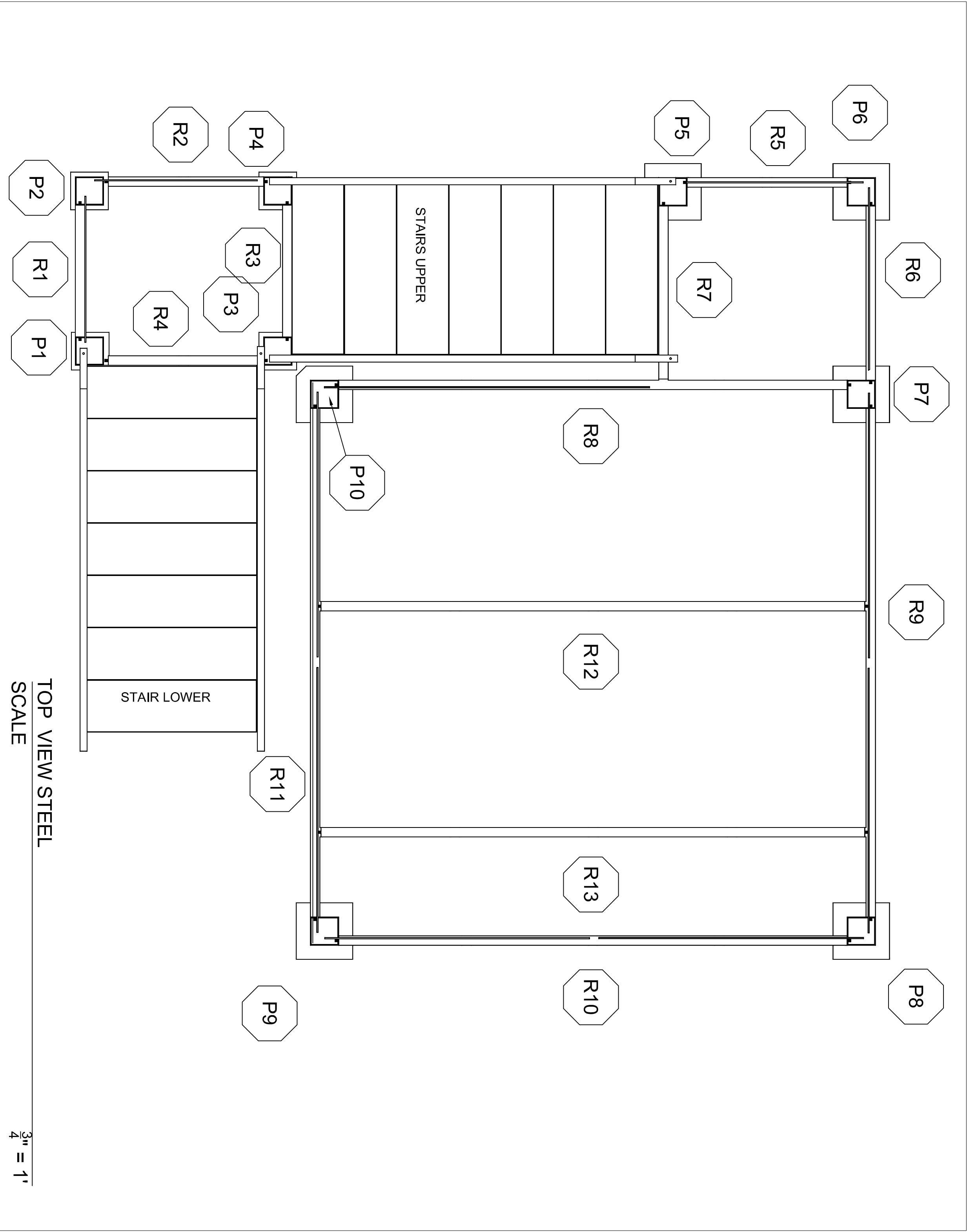


2" X 2" X .095 steel tube frame
w/4" X 4" X .250 steel base plate.
Bolted through deck w/1 1/2" X 5/16" 18 hex
head bolts into T-nuts on bottom side of 1
3/8" plywood decking TYP.

$\frac{1}{2}$ " plywood insert fits in slots on top, bottom and sides

1" —
1" space between
top of deck and
bottom of beam

3'-



NOTE:
ALL ARROWS POINT TOWARD FRONT

